

PINION RACK



RACK & PINION RACK & PINION



PASSION FOR PRECISION TRANSMISSION



High-end Product Position Ensured by Sophisticated Equipment and Operation Excellence



Competitiveness Originated from Reliable Performance and Superior Value Proposition

Since its inception, GearKo has been dedicated to the integrated solution of automation motion products. The company has decades of production experience and has been serving the high-end market world widely.

advanced gear hobbing machines, high-precision gear grinding machines, horizontal machining centers, gear skiving machines, CNCs, coordinate measuring machines, tooth-toothed testers, and computer-based universal tool microscopes etc.

GearKo uses its know-how for high precision planetary reducers and rack & pinion. It has

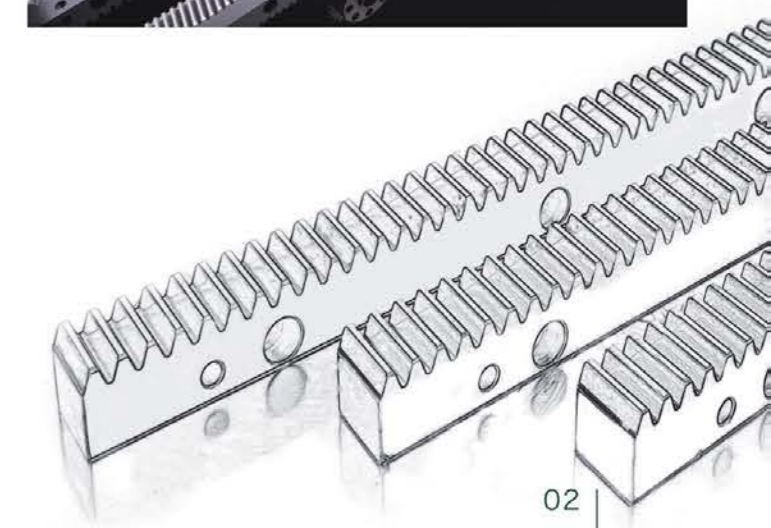


Table of Contents

RACK

Code	Quality Grade	Material	Hardness	Type	Teeth Treatment	Module	Page	
MHTGH-D5	DIN 5	Alloy Steel		Helical Right Hand 19° 31' 42"	Ground	M1,5,2,3,4,5,6,8	06	
MHTGH-D6	DIN 6	Alloy Steel	HRC50-55					07
CHTGH-D6	DIN 6	Carbon Steel					M2,3,4,5,6,8,10,12	08
LHTGH-D6	DIN 6	Super Alloy	HRC58-62				M2,3,4,5,6	09
CHTGH-D7	DIN 7	Carbon Steel	HRC50-55			Shaped		10
CHTSH-D9	DIN 9	Carbon Steel						11
CHTST-D7	DIN 7	Carbon Steel	HRC220-260				M2,3,4,5,6,8,10,12	12
CHTMT-D8	DIN 8	Carbon Steel				Milled		13
MSTGH-D6	DIN 6	Alloy Steel	HRC50-55		Straight Teeth	Ground	M2,3,4,5,6,8	14
CSTGH-D6	DIN 6	Carbon Steel					M2,3,4,5,6,8,10,12	15
LSTGH-D6	DIN 6	Super Alloy	HRC58-62				M2,3,4,5,6	16
CSTGH-D7	DIN 7	Carbon Steel	HRC50-55			Shaped		17
CSTSH-D9	DIN 9	Carbon Steel						18
CSTST-D7	DIN 7	Carbon Steel	HB220-260				M2,3,4,5,6,8,10,12	19
CSTMT-D8	DIN 8	Carbon Steel				Milled		20
CSCST-D7	DIN 7	Carbon Steel		Round Teeth		Shaped		21
MSVGH-CP-D6	DIN 6	Alloy Steel	HRC50-55	Straight Teeth V-rail Rack		Ground	CP5,7,5,10	22
MSTGH-CP-D6	DIN 6			Straight Teeth Rectangular V-rail Rack	23			
MNVGH-D6	DIN 6			V-Rail	24			
MNTGH-D6	DIN 6			Rectangular Rail	25			
MHVGH-D6	DIN 6			Helical V-rail Rack	26			

PINION

Code	Quality Grade	Material	Hardness	Type	Teeth Treatment	Module	Page
MHGH	DIN 6	Alloy Steel	HRC58~62	Hole Type Helical Teeth	Ground	M1,5,2,3,4,5,6,8,10	30-33
MHFGH	DIN 6	Alloy Steel	HRC58~62	Flange Welded Helical Gear	Ground	M2	34
MHFGH	DIN 6	Alloy Steel	HRC58~62	Flange Type Helical Gear + Connecting Plate	Ground	M2,3	35
MHFGH	DIN 6	Alloy Steel	HRC58~62	Flange Type Helical Gear	Ground	M2,3,4,5	36

Rack Code Instruction



- High Precision
- High Speed
- High Performance
- Low Noise
- Long Life
- Quick Delivery

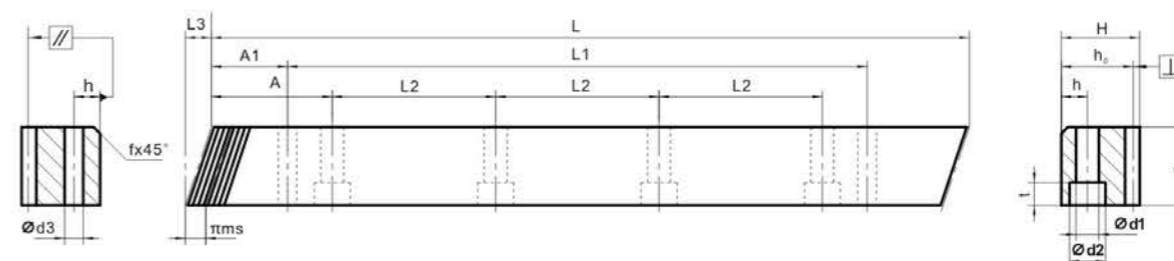
1st	2nd	3rd	4th	5th	6th	7th	8th
Material	Type	Cross-Section	Teeth Making	Heat Treatment	Module	Length	Grade
C=Carbon Steel	S=Straight Rack	T=Tetragon	G=Ground	T=Quenched & Tempered	015=M1.5	05=500mm 10=1000mm 20=2000mm	DIN5-9
M=Alloy Steel	H=Helical Rack	C=Circle	S=Shaped	H=Hardened	020=M2		
L=Super Alloy Steel	N=No Teeth	V=V-Shaped Rail	M=Milled		100=M10		
					CP=Circular Pitch		
					00=No Teeth		

Rack Precision Standard

Test Items	Module Quality Grade	1-2	2-3.55	3.55-6	6-10	10-16
Single Pitch Error F _{pt}	DIN5	7	6	8	9	10
	DIN6	9	9	11	11	14
	DIN7	14	12	16	16	20
	DIN8	18	18	20	25	28
	DIN9	25	25	28	32	40
	DIN10	40	40	45	56	63
Total Pitch Error F _P	DIN5	28	28	32	32	36
	DIN6	36	40	45	45	50
	DIN7	50	56	63	71	71
	DIN8	71	80	90	90	100
	DIN9	100	110	125	125	140
	DIN10	160	180	200	200	220
Tooth Error f _f	DIN5	6	7	9	12	16
	DIN6	8	10	12	16	22
	DIN7	12	14	18	22	28
	DIN8	16	20	25	32	40
	DIN10	36	45	56	71	90
Tooth Error F _β	DIN5	8	8	10	11	13
	DIN6	9	10	13	15	16
	DIN7	15	16	20	23	25
	DIN8	20	20	25	28	32
	DIN10	52	52	65	71	82
Cross Pin Height Deviation	DIN5	21	21	21	21	21
	DIN6	30	30	30	30	30
	DIN7	50	50	50	50	50
	DIN8	66	66	66	66	66
	DIN9	87	87	87	87	87
DIN10	124	124	124	124	124	

MHTGH-D5 Helical Teeth Ground Racks

Quality Grade : DIN 5
Teeth Making : Ground
Material : Alloy Steel
Quenched & Tempered : HB220-260
Right Hand Angle : 19°31' 42"
Hardness : HRC50-55
Pressure Angle : 20°
Ground on All Sides After Hardening



Code	Module	L	L3	No. of Teeth	B	H	h _o	f	A	L2	No. of Holes	h	d1	d2	t	A1	L1	d3	FP	kg
MHTGH01505D5	1.5	500	6.03	100	17	17	15.5	1	62.5	125	4	7	6	10	6	31.7	436.6	5.7	0.028	1.0
MHTGH01510D5	1.5	1000	6.03	200	17	17	15.5	1	62.5	125	8	7	6	10	6	31.7	936.6	5.7	0.028	2.1
MHTGH02005D5	2	500	8.51	75	24	24	22.0	1	62.5	125	4	8	7	11	7	31.7	436.6	5.7	0.028	2.0
MHTGH02010D5	2	1000	8.51	150	24	24	22.0	1	62.5	125	8	8	7	11	7	31.7	936.6	5.7	0.028	3.9
MHTGH03005D5	3	500	10.29	50	29	29	26.0	2	62.5	125	4	9	10	15	9	35	430.0	7.7	0.028	2.9
MHTGH03010D5	3	1000	10.29	100	29	29	26.0	2	62.5	125	8	9	10	15	9	35	930.0	7.7	0.028	5.8
MHTGH04005D5	4	506.67	13.83	38	39	39	35.0	2	62.5	125	4	12	10	15	9	33.3	433.4	7.7	0.032	5.2
MHTGH04010D5	4	1000	13.83	75	39	39	35.0	2	62.5	125	8	12	10	15	9	33.3	933.4	7.7	0.032	10.3
MHTGH05005D5	5	500	17.38	30	49	49	34.0	3	62.5	125	4	12	14	20	13	37.5	425.0	11.7	0.032	6.6
MHTGH05010D5	5	1000	17.38	60	49	49	34.0	3	62.5	125	8	12	14	20	13	37.5	925.0	11.7	0.032	12.9
MHTGH06005D5	6	500	20.93	25	59	59	43.0	3	62.5	125	4	16	18	26	17	37.5	425.0	15.7	0.032	9.9
MHTGH06010D5	6	1000	20.93	50	59	59	43.0	3	62.5	125	8	16	18	26	17	37.5	925.0	15.7	0.032	19.7
MHTGH08005D5	8	480	28.02	18	79	79	71.0	4	60	120	4	25	22	33	21	120	240.0	19.7	0.032	21.1
MHTGH08010D5	8	960	28.02	36	79	79	71.0	4	60	120	8	25	22	33	21	120	720.0	19.7	0.032	42.1

MHTGH-D6 Helical Teeth Ground Racks

Quality Grade : DIN 6

Teeth Making : Ground

Material : Alloy Steel

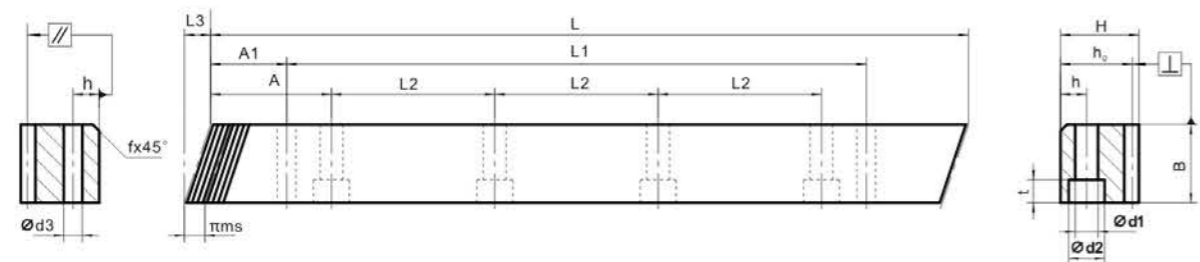
Quenched & Tempered : HB220-260

Right Hand Angle : 19°31'42"

Hardness : HRC50-55

Pressure Angle : 20°

Ground on All Sides After Hardening



Code	Module	L	L3	No. of Teeth	B	H	h ₀	f	A	L2	No. of Holes	h	d1	d2	t	A1	L1	d3	FP	kg
MHTGH01505D6	1.5	500	6.03	100	17	17	15.5	1	62.5	125	4	7	6	10	6	31.7	436.6	5.7	0.036	1.0
MHTGH01510D6	1.5	1000	6.03	200	17	17	15.5	1	62.5	125	8	7	6	10	6	31.7	936.6	5.7	0.036	2.1
MHTGH02005D6	2	500	8.51	75	24	24	22.0	1	62.5	125	4	8	7	11	7	31.7	436.6	5.7	0.036	2.0
MHTGH02010D6	2	1000	8.51	150	24	24	22.0	1	62.5	125	8	8	7	11	7	31.7	936.6	5.7	0.036	3.9
MHTGH02020D6	2	2000	8.51	300	24	24	22.0	1	62.5	125	16	8	7	11	7	31.7	1936.6	5.7	0.036	7.8
MHTGH03005D6	3	500	10.29	50	29	29	26.0	2	62.5	125	4	9	10	15	9	35	430.0	7.7	0.040	2.9
MHTGH03010D6	3	1000	10.29	100	29	29	26.0	2	62.5	125	8	9	10	15	9	35	930.0	7.7	0.040	5.8
MHTGH03020D6	3	2000	10.29	200	29	29	26.0	2	62.5	125	16	9	10	15	9	35	1930.0	7.7	0.040	11.3
MHTGH04005D6	4	506.67	13.83	38	39	39	35.0	2	62.5	125	4	12	10	15	9	33.3	433.4	7.7	0.045	5.2
MHTGH04010D6	4	1000	13.83	75	39	39	35.0	2	62.5	125	8	12	10	15	9	33.3	933.4	7.7	0.045	10.3
MHTGH04020D6	4	2000	13.83	150	39	39	35.0	2	62.5	125	16	12	10	15	9	33.3	1933.4	7.7	0.045	20.5
MHTGH05005D6	5	500	17.38	30	49	49	34.0	3	62.5	125	4	12	14	20	13	37.5	425.0	11.7	0.045	6.6
MHTGH05010D6	5	1000	17.38	60	49	49	34.0	3	62.5	125	8	12	14	20	13	37.5	925.0	11.7	0.045	12.9
MHTGH05020D6	5	2000	17.38	120	49	49	34.0	3	62.5	125	16	12	14	20	13	37.5	1925.0	11.7	0.045	25.8
MHTGH06005D6	6	500	20.93	25	59	59	43.0	3	62.5	125	4	16	18	26	17	37.5	425.0	15.7	0.045	9.9
MHTGH06010D6	6	1000	20.93	50	59	59	43.0	3	62.5	125	8	16	18	26	17	37.5	925.0	15.7	0.045	19.7
MHTGH06020D6	6	2000	20.93	100	59	59	43.0	3	62.5	125	16	16	18	26	17	37.5	1925.0	15.7	0.045	39.5
MHTGH08005D6	8	480	28.02	18	79	79	71.0	4	60	120	4	25	22	33	21	120	240.0	19.7	0.045	21.1
MHTGH08010D6	8	960	28.02	36	79	79	71.0	4	60	120	8	25	22	33	21	120	720.0	19.7	0.045	42.1
MHTGH08020D6	8	1920	28.02	72	79	79	71.0	4	60	120	16	25	22	33	21	120	1680.0	19.7	0.045	84.2
MHTGH10005D6	10	500	35.11	16	99	99	89.0	4	62.5	125	4	32	33	48	32	125	250.0	19.7	0.045	33.1
MHTGH10010D6	10	1000	35.11	32	99	99	89.0	4	62.5	125	8	32	33	48	32	125	750.0	19.7	0.045	66.1
MHTGH12005D6	12	520	42.56	13	120	120	108.0	4	40	125	4	40	39	58	38	102.5	250.0	19.7	0.050	53.0
MHTGH12010D6	12	1000	42.56	25	120	120	108.0	4	40	125	8	40	39	58	38	102.5	750.0	19.7	0.050	98.3

CHTGH-D6 Helical Teeth Ground Racks

Quality Grade : DIN 6

Teeth Making : Ground

Material : Carbon Steel

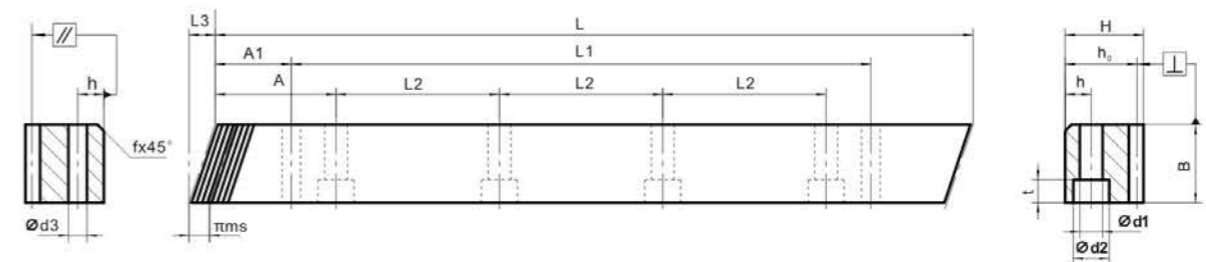
Quenched & Tempered : HB220-260

Right Hand Angle : 19°31'42"

Hardness : HRC50-55

Pressure Angle : 20°

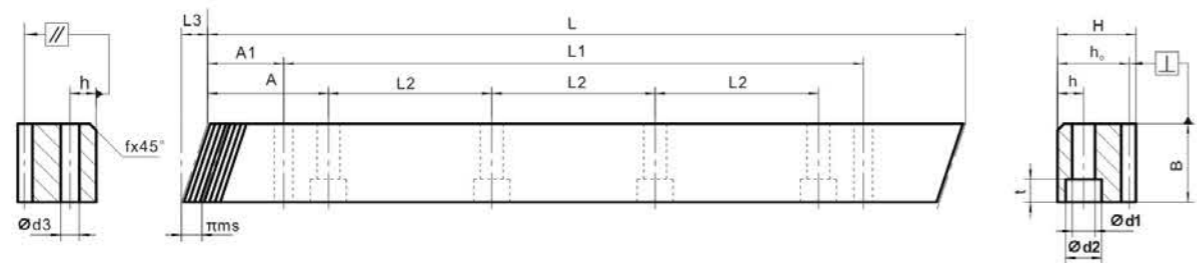
Ground on All Sides After Hardening



Code	Module	L	L3	No. of Teeth	B	H	h ₀	f	A	L2	No. of Holes	h	d1	d2	t	A1	L1	d3	FP	kg
CHTGH01505D6	1.5	500	6.03	100	17	17	15.5	1	62.5	125	4	7	6	10	6	31.7	436.6	5.7	0.036	1.0
CHTGH01510D6	1.5	1000	6.03	200	17	17	15.5	1	62.5	125	8	7	6	10	6	31.7	936.6	5.7	0.036	2.1
CHTGH02005D6	2	500	8.51	75	24	24	22.0	1	62.5	125	4	8	7	11	7	31.7	436.6	5.7	0.036	2.0
CHTGH02010D6	2	1000	8.51	150	24	24	22.0	1	62.5	125	8	8	7	11	7	31.7	936.6	5.7	0.036	3.9
CHTGH02020D6	2	2000	8.51	300	24	24	22.0	1	62.5	125	16	8	7	11	7	31.7	1936.6	5.7	0.036	7.8
CHTGH03005D6	3	500	10.29	50	29	29	26.0	2	62.5	125	4	9	10	15	9	35	430.0	7.7	0.040	2.9
CHTGH03010D6	3	1000	10.29	100	29	29	26.0	2	62.5	125	8	9	10	15	9	35	930.0	7.7	0.040	5.8
CHTGH03020D6	3	2000	10.29	200	29	29	26.0	2	62.5	125	16	9	10	15	9	35	1930.0	7.7	0.040	11.3
CHTGH04005D6	4	506.67	13.83	38	39	39	35.0	2	62.5	125	4	12	10	15	9	33.3	433.4	7.7	0.045	5.2
CHTGH04010D6	4	1000	13.83	75	39	39	35.0	2	62.5	125	8	12	10	15	9	33.3	933.4	7.7	0.045	10.3
CHTGH04020D6	4	2000	13.83	150	39	39	35.0	2	62.5	125	16	12	10	15	9	33.3	1933.4	7.7	0.045	20.5
CHTGH05005D6	5	500	17.38	30	49	49	34.0	3	62.5	125	4	12	14	20	13	37.5	425.0	11.7	0.045	6.6
CHTGH05010D6	5	1000	17.38	60	49	49	34.0	3	62.5	125	8	12	14	20	13	37.5	925.0	11.7	0.045	12.9
CHTGH05020D6	5	2000	17.38	120	49	49	34.0	3	62.5	125	16	12	14	20	13	37.5	1925.0	11.7	0.045	25.8
CHTGH06005D6	6	500	20.93	25	59	59	43.0	3	62.5	125	4	16	18	26	17	37.5	425.0	15.7	0.045	9.9
CHTGH06010D6	6	1000	20.93	50	59	59	43.0	3	62.5	125	8	16	18	26	17	37.5	925.0	15.7	0.045	19.7
CHTGH06020D6	6	2000	20.93	100	59	59	43.0	3	62.5	125	16	16	18	26	17	37.5	1925.0	15.7	0.045	39.5
CHTGH08005D6	8	480	28.02	18	79	79	71.0	4	60	120	4	25	22	33	21	120	240.0	19.7	0.045	21.1
CHTGH08010D6	8	960	28.02	36	79	79	71.0	4	60	120	8	25	22	33	21	120	720.0	19.7	0.045	42.1
CHTGH08020D6	8	1920	28.02	72	79	79	71.0	4	60	120	16	25	22	33	21	120	1680.0	19.7	0.045	84.2
CHTGH10005D6	10	500	35.11	16	99	99	89.0	4	62.5	125	4	32	33	48	32	125	250.0	19.7	0.045	33.1
CHTGH10010D6	10	1000	35.11	32	99	99	89.0	4	62.5	125	8	32	33	48	32	125	750.0	19.7	0.045	66.1
CHTGH12005D6	12	520	42.56	13	120	120	108.0	4	40	125	4	40	39	58	38	102.5	250.0	19.7	0.050	53.0
CHTGH12010D6	12	1000	42.56	25	120	120	108.0	4	40	125	8	40	39	58	38	102.5	750.0	19.7	0.050	98.3

LHTGH-D6 Helical Teeth Ground Racks

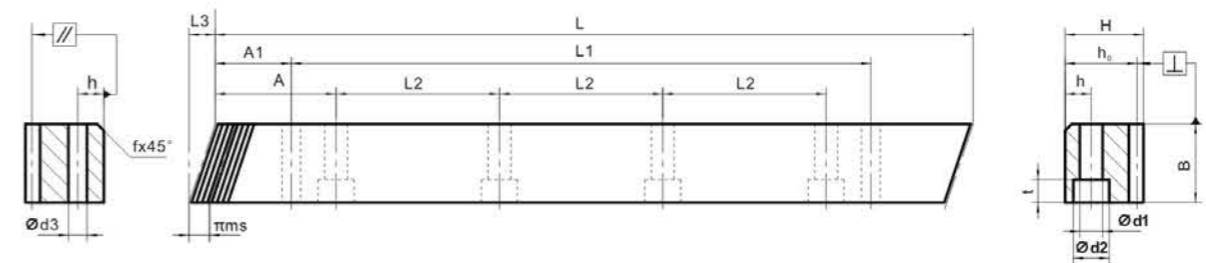
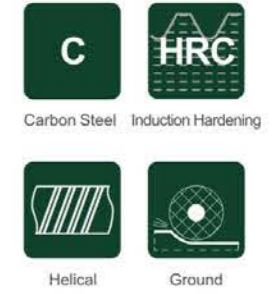
Quality Grade : DIN 6
 Teeth Making : Ground
 Material : Super Alloy
 Quenched & Tempered : HB220-260
 Right Hand Angle : 19°31'42"
 Hardness : HRC58-62
 Pressure Angle : 20°
 Ground on All Sides After Hardening



Code	Module	L	L3	No. of Teeth	B	H	h ₀	f	A	L2	No. of Holes	h	d1	d2	t	A1	L1	d3	FP	kg
LHTGH01505D6	1.5	500	6.03	100	17	17	15.5	1	62.5	125	4	7	6	10	6	31.7	436.6	5.7	0.036	1.0
LHTGH01510D6	1.5	1000	6.03	200	17	17	15.5	1	62.5	125	8	7	6	10	6	31.7	936.6	5.7	0.036	2.1
LHTGH02005D6	2	500	8.51	75	24	24	22.0	1	62.5	125	4	8	7	11	7	31.7	436.6	5.7	0.036	2.0
LHTGH02010D6	2	1000	8.51	150	24	24	22.0	1	62.5	125	8	8	7	11	7	31.7	936.6	5.7	0.036	3.9
LHTGH03005D6	3	500	10.29	50	29	29	26.0	2	62.5	125	4	9	10	15	9	35	430.0	7.7	0.040	2.9
LHTGH03010D6	3	1000	10.29	100	29	29	26.0	2	62.5	125	8	9	10	15	9	35	930.0	7.7	0.040	5.8
LHTGH04005D6	4	506.67	13.83	38	39	39	35.0	2	62.5	125	4	12	10	15	9	33.3	433.4	7.7	0.045	5.2
LHTGH04010D6	4	1000	13.83	75	39	39	35.0	2	62.5	125	8	12	10	15	9	33.3	933.4	7.7	0.045	10.3
LHTGH05005D6	5	500	17.38	30	49	49	34.0	3	62.5	125	4	12	14	20	13	37.5	425.0	11.7	0.045	6.6
LHTGH05010D6	5	1000	17.38	60	49	49	34.0	3	62.5	125	8	12	14	20	13	37.5	925.0	11.7	0.045	12.9
LHTGH06005D6	6	500	20.93	25	59	59	43.0	3	62.5	125	4	16	18	26	17	37.5	425.0	15.7	0.045	9.9
LHTGH06010D6	6	1000	20.93	50	59	59	43.0	3	62.5	125	8	16	18	26	17	37.5	925.0	15.7	0.045	19.7

CHTGH-D7 Helical Teeth Ground Racks

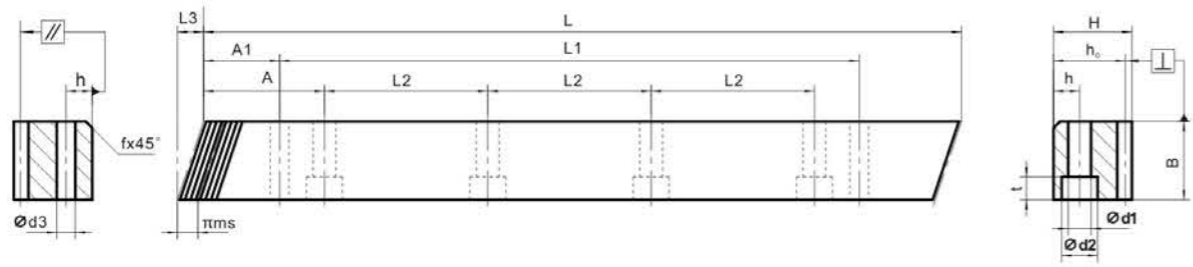
Quality Grade : DIN 7
 Teeth Making : Ground
 Material : Carbon Steel
 Quenched & Tempered : HB220-260
 Right Hand Angle : 19°31'42"
 Hardness : HRC50-55
 Pressure Angle : 20°
 Ground on All Sides After Hardening



Code	Module	L	L3	No. of Teeth	B	H	h ₀	f	A	L2	No. of Holes	h	d1	d2	t	A1	L1	d3	FP	kg
CHTGH01505D7	1.5	500	6.03	100	17	17	15.5	1	62.5	125	4	7	6	10	6	31.7	436.6	5.7	0.050	1.0
CHTGH01510D7	1.5	1000	6.03	200	17	17	15.5	1	62.5	125	8	7	6	10	6	31.7	936.6	5.7	0.050	2.1
CHTGH02005D7	2	500	8.51	75	24	24	22.0	1	62.5	125	4	8	7	11	7	31.7	436.6	5.7	0.050	2.0
CHTGH02010D7	2	1000	8.51	150	24	24	22.0	1	62.5	125	8	8	7	11	7	31.7	936.6	5.7	0.050	3.9
CHTGH02020D7	2	2000	8.51	300	24	24	22.0	1	62.5	125	16	8	7	11	7	31.7	1936.6	5.7	0.050	7.8
CHTGH03005D7	3	500	10.29	50	29	29	26.0	2	62.5	125	4	9	10	15	9	35	430.0	7.7	0.056	2.9
CHTGH03010D7	3	1000	10.29	100	29	29	26.0	2	62.5	125	8	9	10	15	9	35	930.0	7.7	0.056	5.8
CHTGH03020D7	3	2000	10.29	200	29	29	26.0	2	62.5	125	16	9	10	15	9	35	1930.0	7.7	0.056	11.3
CHTGH04005D7	4	506.67	13.83	38	39	39	35.0	2	62.5	125	4	12	10	15	9	33.3	433.4	7.7	0.063	5.2
CHTGH04010D7	4	1000	13.83	75	39	39	35.0	2	62.5	125	8	12	10	15	9	33.3	933.4	7.7	0.063	10.3
CHTGH04020D7	4	2000	13.83	150	39	39	35.0	2	62.5	125	16	12	10	15	9	33.3	1933.4	7.7	0.063	20.5
CHTGH05005D7	5	500	17.38	30	49	49	34.0	3	62.5	125	4	12	14	20	13	37.5	425.0	11.7	0.063	6.6
CHTGH05010D7	5	1000	17.38	60	49	49	34.0	3	62.5	125	8	12	14	20	13	37.5	925.0	11.7	0.063	12.9
CHTGH05020D7	5	2000	17.38	120	49	49	34.0	3	62.5	125	16	12	14	20	13	37.5	1925.0	11.7	0.063	25.8
CHTGH06005D7	6	500	20.93	25	59	59	43.0	3	62.5	125	4	16	18	26	17	37.5	425.0	15.7	0.063	9.9
CHTGH06010D7	6	1000	20.93	50	59	59	43.0	3	62.5	125	8	16	18	26	17	37.5	925.0	15.7	0.063	19.7
CHTGH06020D7	6	2000	20.93	100	59	59	43.0	3	62.5	125	16	16	18	26	17	37.5	1925.0	15.7	0.063	39.5
CHTGH08005D7	8	480	28.02	18	79	79	71.0	4	60	120	4	25	22	33	21	120	240.0	19.7	0.071	21.1
CHTGH08010D7	8	960	28.02	36	79	79	71.0	4	60	120	8	25	22	33	21	120	720.0	19.7	0.071	42.1
CHTGH08020D7	8	1920	28.02	72	79	79	71.0	4	60	120	16	25	22	33	21	120	1680.0	19.7	0.071	84.2
CHTGH10005D	10	500	35.11	16	99	99	89.0	4	62.5	125	4	32	33	48	32	125	250.0	19.7	0.071	33.1
CHTGH10010D7	10	1000	35.11	32	99	99	89.0	4	62.5	125	8	32	33	48	32	125	750.0	19.7	0.071	66.1
CHTGH12005D7	12	520	42.56	13	120	120	108.0	4	40	125	4	40	39	58	38	102.5	250.0	19.7	0.071	53.0
CHTGH12010D7	12	1000	42.56	25	120	120	108.0	4	40	125	8	40	39	58	38	102.5	750.0	19.7	0.071	98.3

CHTSH-D9 Helical Gear Shaped Racks

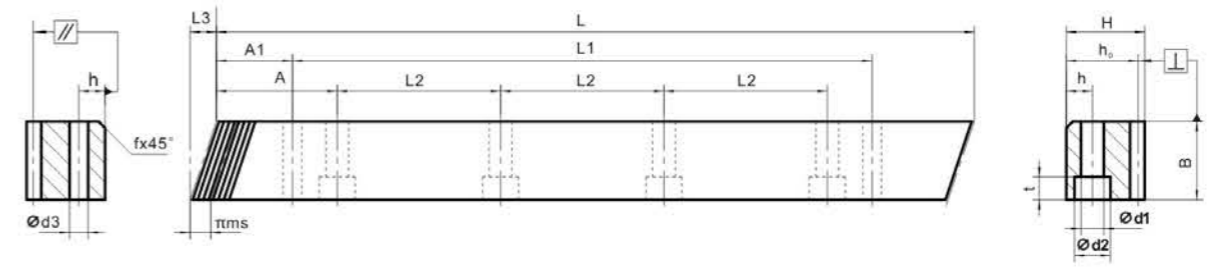
Quality Grade : DIN 9	Teeth Making : Ground
Material : Carbon Steel	Quenched & Tempered : HB220-260
Right Hand Angle : 19°31'42"	Hardness : HRC50-55
Pressure Angle : 20°	Ground on All Sides After Hardening



Code	Module	L	L3	No. of Teeth	B	H	h ₀	f	A	L2	No. of Holes	h	d1	d2	t	A1	L1	d3	FP	kg
CHTSH01505D9	1.5	500	6.03	100	17	17	15.5	1	62.5	125	4	7	6	10	6	31.7	436.6	5.7	0.100	1.0
CHTSH01510D9	1.5	1000	6.03	200	17	17	15.5	1	62.5	125	8	7	6	10	6	31.7	936.6	5.7	0.100	2.1
CHTSH02005D9	2	500	8.51	75	24	24	22.0	1	62.5	125	4	8	7	11	7	31.7	436.6	5.7	0.100	2.0
CHTSH02010D9	2	1000	8.51	150	24	24	22.0	1	62.5	125	8	8	7	11	7	31.7	936.6	5.7	0.100	3.9
CHTSH02020D9	2	2000	8.51	300	24	24	22.0	1	62.5	125	16	8	7	11	7	31.7	1936.6	5.7	0.100	7.8
CHTSH03005D9	3	500	10.29	50	29	29	26.0	2	62.5	125	4	9	10	15	9	35	430.0	7.7	0.110	2.9
CHTSH03010D9	3	1000	10.29	100	29	29	26.0	2	62.5	125	8	9	10	15	9	35	930.0	7.7	0.110	5.8
CHTSH03020D9	3	2000	10.29	200	29	29	26.0	2	62.5	125	16	9	10	15	9	35	1930.0	7.7	0.110	11.3
CHTSH04005D9	4	506.67	13.83	38	39	39	35.0	2	62.5	125	4	12	10	15	9	33.3	433.4	7.7	0.125	5.2
CHTSH04010D9	4	1000	13.83	75	39	39	35.0	2	62.5	125	8	12	10	15	9	33.3	933.4	7.7	0.125	10.3
CHTSH04020D9	4	2000	13.83	150	39	39	35.0	2	62.5	125	16	12	10	15	9	33.3	1933.4	7.7	0.125	20.5
CHTSH05005D9	5	500	17.38	30	49	49	34.0	3	62.5	125	4	12	14	20	13	37.5	425.0	11.7	0.125	6.6
CHTSH05010D9	5	1000	17.38	60	49	49	34.0	3	62.5	125	8	12	14	20	13	37.5	925.0	11.7	0.125	12.9
CHTSH05020D9	5	2000	17.38	120	49	49	34.0	3	62.5	125	16	12	14	20	13	37.5	1925.0	11.7	0.125	25.8
CHTSH06005D9	6	500	20.93	25	59	59	43.0	3	62.5	125	4	16	18	26	17	37.5	425.0	15.7	0.125	9.9
CHTSH06010D9	6	1000	20.93	50	59	59	43.0	3	62.5	125	8	16	18	26	17	37.5	925.0	15.7	0.125	19.7
CHTSH06020D9	6	2000	20.93	100	59	59	43.0	3	62.5	125	16	16	18	26	17	37.5	1925.0	15.7	0.125	39.5

CHTST-D7 Helical Gear Shaped Racks

Quality Grade : DIN 7	Teeth Making : Shaped
Material : Carbon Steel	Quenched & Tempered : HB220-260
Right Hand Angle : 19°31'42"	Ground on All Sides After Hardening
Pressure Angle : 20°	



Code	Module	L	L3	No. of Teeth	B	H	h ₀	f	A	L2	No. of Holes	h	d1	d2	t	A1	L1	d3	FP	kg
CHTST01505D7	1.5	500	6.03	100	17	17	15.5	1	62.5	125	4	7	6	10	6	31.7	436.6	5.7	0.050	1.0
CHTST01510D7	1.5	1000	6.03	200	17	17	15.5	1	62.5	125	8	7	6	10	6	31.7	936.6	5.7	0.050	2.1
CHTST02005D7	2	500	8.87	75	25	24	22.0	1	62.5	125	4	8	7	11	7	31.7	436.6	5.7	0.050	2.0
CHTST02010D7	2	1000	8.87	150	25	24	22.0	1	62.5	125	8	8	7	11	7	31.7	936.6	5.7	0.050	3.9
CHTST02020D7	2	2000	8.87	300	25	24	22.0	1	62.5	125	16	8	7	11	7	31.7	1936.6	5.7	0.050	7.8
CHTST03005D7	3	500	10.64	50	30	29	26.0	2	62.5	125	4	9	10	15	9	35	430.0	7.7	0.056	2.9
CHTST03010D7	3	1000	10.64	100	30	29	26.0	2	62.5	125	8	9	10	15	9	35	930.0	7.7	0.056	5.8
CHTST03020D7	3	2000	10.64	200	30	29	26.0	2	62.5	125	16	9	10	15	9	35	1930.0	7.7	0.056	11.3
CHTST04005D7	4	506.67	14.18	38	40	39	35.0	2	62.5	125	4	12	10	15	9	33.3	433.4	7.7	0.063	5.2
CHTST04010D7	4	1000	14.18	75	40	39	35.0	2	62.5	125	8	12	10	15	9	33.3	933.4	7.7	0.063	10.3
CHTST04020D7	4	2000	14.18	150	40	39	35.0	2	62.5	125	16	12	10	15	9	33.3	1933.4	7.7	0.063	20.5
CHTST05005D7	5	500	17.38	30	49	49	34.0	3	62.5	125	4	12	14	20	13	37.5	425.0	11.7	0.063	6.6
CHTST05010D7	5	1000	17.38	60	49	49	34.0	3	62.5	125	8	12	14	20	13	37.5	925.0	11.7	0.063	12.9
CHTST05020D7	5	2000	17.38	120	49	49	34.0	3	62.5	125	16	12	14	20	13	37.5	1925.0	11.7	0.063	25.8
CHTST06005D7	6	500	20.93	25	59	59	43.0	3	62.5	125	4	16	18	26	17	37.5	425.0	15.7	0.063	9.9
CHTST06010D7	6	1000	20.93	50	59	59	43.0	3	62.5	125	8	16	18	26	17	37.5	925.0	15.7	0.063	19.7
CHTST06020D7	6	2000	20.93	100	59	59	43.0	3	62.5	125	16	16	18	26	17	37.5	1925.0	15.7	0.063	39.5
CHTST08005D7	8	480	28.02	18	79	79	71.0	4	60	120	4	25	22	33	21	120	2400	19.7	0.071	21.1
CHTST08010D7	8	960	28.02	36	79	79	71.0	4	60	120	8	25	22	33	21	120	7200	19.7	0.071	42.1
CHTST08020D7	8	1920	28.02	72	79	79	71.0	4	60	120	16	25	22	33	21	120	16800	19.7	0.071	84.2
CHTST10005D7	10	500	35.11	16	99	99	89.0	4	62.5	125	4	32	33	48	32	125	2500	19.7	0.071	33.1
CHTST10010D7	10	1000	35.11	32	99	99	89.0	4	62.5	125	8	32	33	48	32	125	7500	19.7	0.071	66.1
CHTST12005D7	12	520	42.56	13	120	120	108.0	4	40	125	4	40	39	58	38	102.5	2500	19.7	0.071	53.0
CHTST12010D7	12	1000	42.56	25	120	120	108.0	4	40	125	8	40	39	58	38	102.5	7500	19.7	0.071	98.3

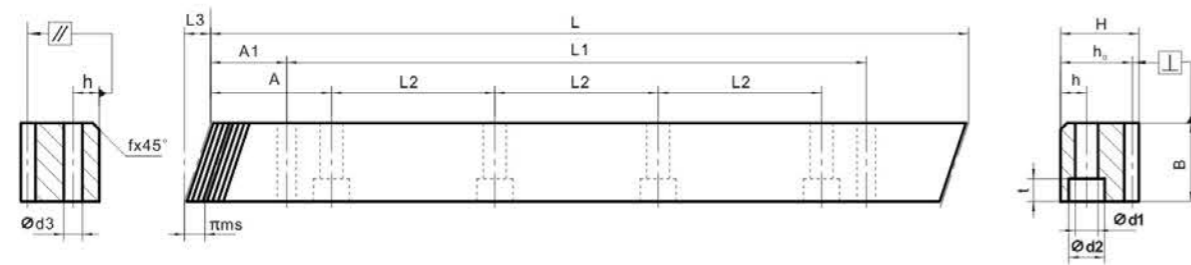
CHTMT-D8 Helical Milled Racks

Quality Grade : DIN 8
 Teeth Making : Ground

Material : Carbon Steel
 Quenched & Tempered : HB220-260

Right Hand Angle : 19°31'42"
 Ground on All Sides After Hardening

Pressure Angle : 20°



Code	Module	L	L3	No. of Teeth	B	H	h ₀	f	A	L2	No. of Holes	h	d1	d2	t	A1	L1	d3	FP	kg
CHTMT01505D8	1.5	500	6.03	100	17	17	15.5	1	62.5	125	4	7	6	10	6	31.7	436.6	5.7	0.071	1.0
CHTMT01510D8	1.5	1000	6.03	200	17	17	15.5	1	62.5	125	8	7	6	10	6	31.7	936.6	5.7	0.071	2.1
CHTMT02005D8	2	500	8.87	75	25	24	22.0	1	62.5	125	4	8	7	11	7	31.7	436.6	5.7	0.071	2.0
CHTMT02010D8	2	1000	8.87	150	25	24	22.0	1	62.5	125	8	8	7	11	7	31.7	936.6	5.7	0.071	3.9
CHTMT02020D8	2	2000	8.87	300	25	24	22.0	1	62.5	125	16	8	7	11	7	31.7	1936.6	5.7	0.071	7.8
CHTMT03005D8	3	500	10.64	50	30	29	26.0	2	62.5	125	4	9	10	15	9	35	430.0	7.7	0.080	2.9
CHTMT03010D8	3	1000	10.64	100	30	29	26.0	2	62.5	125	8	9	10	15	9	35	930.0	7.7	0.080	5.8
CHTMT03020D8	3	2000	10.64	200	30	29	26.0	2	62.5	125	16	9	10	15	9	35	1930.0	7.7	0.080	11.3
CHTMT04005D8	4	506.67	14.18	38	40	39	35.0	2	62.5	125	4	12	10	15	9	33.3	433.4	7.7	0.090	5.2
CHTMT04010D8	4	1000	14.18	75	40	39	35.0	2	62.5	125	8	12	10	15	9	33.3	933.4	7.7	0.090	10.3
CHTMT04020D8	4	2000	14.18	150	40	39	35.0	2	62.5	125	16	12	10	15	9	33.3	1933.4	7.7	0.090	20.5
CHTMT05005D8	5	500	17.38	30	49	39	34.0	3	62.5	125	4	12	14	20	13	37.5	425.0	11.7	0.090	6.6
CHTMT05010D8	5	1000	17.38	60	49	39	34.0	3	62.5	125	8	12	14	20	13	37.5	925.0	11.7	0.090	12.9
CHTMT05020D8	5	2000	17.38	120	49	39	34.0	3	62.5	125	16	12	14	20	13	37.5	1925.0	11.7	0.090	25.8
CHTMT06005D8	6	500	20.93	25	59	49	43.0	3	62.5	125	4	16	18	26	17	37.5	425.0	15.7	0.090	9.9
CHTMT06010D8	6	1000	20.93	50	59	49	43.0	3	62.5	125	8	16	18	26	17	37.5	925.0	15.7	0.090	19.7
CHTMT06020D8	6	2000	20.93	100	59	49	43.0	3	62.5	125	16	16	18	26	17	37.5	1925.0	15.7	0.090	39.5
CHTMT08005D8	8	480	28.02	18	79	79	71.0	4	60	120	4	25	22	33	21	120	240.0	19.7	0.100	21.1
CHTMT08010D8	8	960	28.02	36	79	79	71.0	4	60	120	8	25	22	33	21	120	720.0	19.7	0.100	42.1
CHTMT08020D8	8	1920	28.02	72	79	79	71.0	4	60	120	16	25	22	33	21	120	1680.0	19.7	0.100	84.2
CHTMT10005D8	10	500	35.11	16	99	99	89.0	4	62.5	125	4	32	33	48	32	125	250.0	19.7	0.100	33.1
CHTMT10010D8	10	1000	35.11	32	99	99	89.0	4	62.5	125	8	32	33	48	32	125	750.0	19.7	0.100	66.1
CHTMT12005D8	12	520	42.56	13	120	120	108.0	4	40	125	4	40	39	58	38	102.5	250.0	19.7	0.100	53.0
CHTMT12010D8	12	1000	42.56	25	120	120	108.0	4	40	125	8	40	39	58	38	102.5	750.0	19.7	0.100	98.3

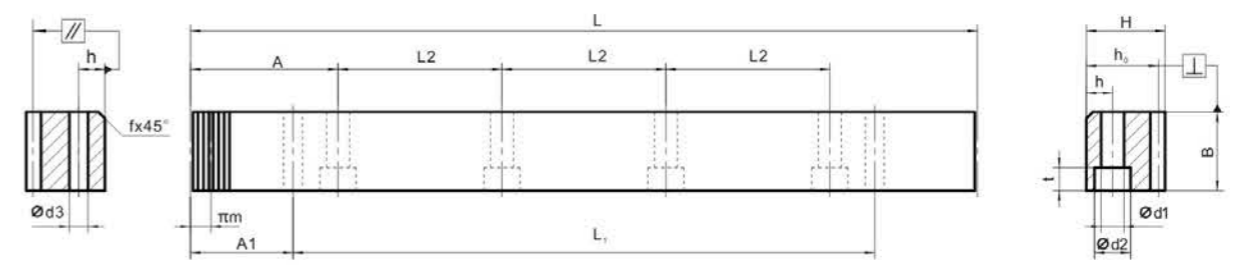
MSTGH-D6 Straight Teeth Ground Racks

Quality Grade : DIN 6
 Quenched & Tempered : HB220-260

Material : Alloy Steel
 Hardness : HRC58-62

Pressure Angle : 20°
 Ground on All Sides After Hardening

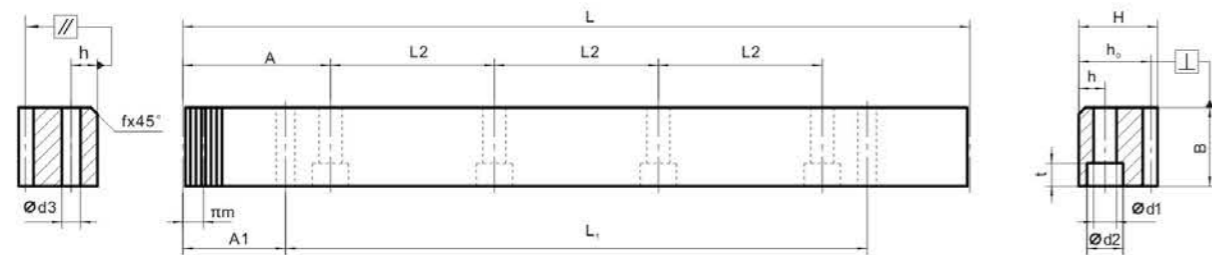
Teeth Making : Ground



Code	Module	L	No. of Teeth	B	H	h ₀	f	A	L2	No. of Holes	h	d1	d2	t	A1	L1	d3	FP	kg
MSTGH01505D6	1.5	499.51	106	17	17	15.5	1	62.85	124.88	4	7	6	10	6	29	441.51	5.7	0.036	1.0
MSTGH01510D6	1.5	999.03	212	17	17	15.5	1	62.85	124.88	8	7	6	10	6	29	941.00	5.7	0.036	2.1
MSTGH02005D6	2	502.65	80	24	24	22.0	1	62.83	125.66	4	8	7	11	7	31.3	440.10	5.7	0.036	2.0
MSTGH02010D6	2	1005.31	160	24	24	22.0	1	62.83	125.66	8	8	7	11	7	31.3	942.70	5.7	0.036	3.9
MSTGH03005D6	3	508.94	54	29	29	26.0	2	63.62	127.23	4	9	10	15	9	34.4	440.10	7.7	0.040	2.9
MSTGH03010D6	3	1017.88	108	29	29	26.0	2	63.62	127.23	8	9	10	15	9	34.4	949.10	7.7	0.040	5.8
MSTGH04005D6	4	502.65	40	39	39	35.0	2	62.83	125.66	4	12	10	15	9	37.5	427.70	7.7	0.045	5.2
MSTGH04010D6	4	1005.31	80	39	39	35.0	2	62.83	125.66	8	12	10	15	9	37.5	930.30	7.7	0.045	10.3
MSTGH05005D6	5	502.65	32	49	39	34.0	3	62.83	125.66	4	12	14	20	13	30.1	442.40	11.7	0.045	6.6
MSTGH05010D6	5	1005.31	64	49	39	34.0	3	62.83	125.66	8	12	14	20	13	30.1	945.00	11.7	0.045	12.9
MSTGH05020D6	5	2010.62	128	49	39	34.0	3	62.83	125.66	16	12	14	20	13	30.1	1950.40	11.7	0.045	25.8
MSTGH06005D6	6	508.94	27	59	49	43.0	3	63.6	127.23	4	16	18	26	17	31.4	446.10	15.7	0.045	9.9
MSTGH06010D6	6	1017.88	54	59	49	43.0	3	63.62	127.23	8	16	18	26	17	31.4	955.00	15.7	0.045	19.7
MSTGH06020D6	6	2035.75	108	59	49	43.0	3	63.62	127.23	16	16	18	26	17	31.4	1973.00	15.7	0.045	39.5
MSTGH08005D6	8	502.65	20	79	79	71.0	4	62.83	125.66	4	25	22	33	21	26.6	449.45	19.7	0.045	21.1
MSTGH08010D6	8	1005.31	40	79	79	71.0	4	62.83	125.66	8	25	22	33	21	26.6	952.00	19.7	0.045	42.1
MSTGH08020D6	8	2010.61	80	79	79	71.0	4	62.83	125.66	16	25	22	33	21	26.6	1957.40	19.7	0.045	84.2

CSTGH-D6 Straight Teeth Ground Racks

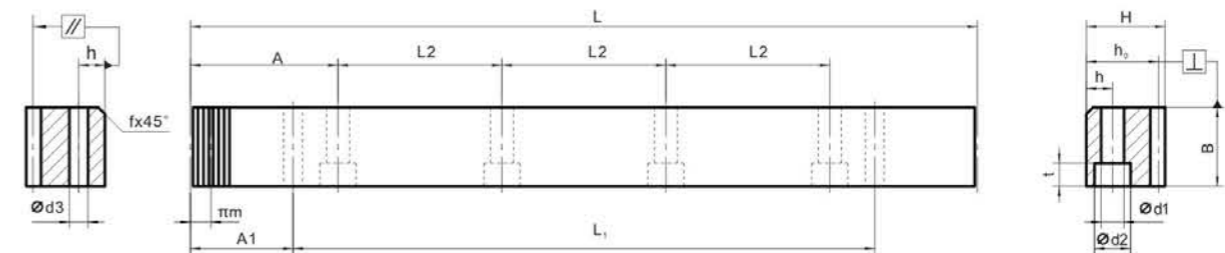
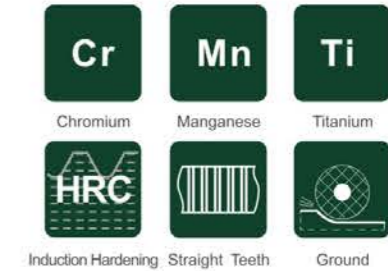
Quality Grade : DIN 6
 Quenched & Tempered : HB220-260
 Material : Carbon Steel
 Hardness : HRC50-55
 Pressure Angle : 20°
 Ground on All Sides After Hardening
 Teeth Making : Ground



Code	Module	L	No. of Teeth	B	H	h ₀	f	A	L2	No. of Holes	h	d1	d2	t	A1	L1	d3	FP	kg
CSTGH01505D6	1.5	499.51	106	17	17	15.5	1	62.85	124.88	4	7	6	10	6	29	441.51	5.7	0.036	1.0
CSTGH01510D6	1.5	999.03	212	17	17	15.5	1	62.85	124.88	8	7	6	10	6	29	941.00	5.7	0.036	2.1
CSTGH02005D6	2	502.65	80	24	24	22.0	1	62.83	125.66	4	8	7	11	7	31.3	440.10	5.7	0.036	2.0
CSTGH02010D6	2	1005.31	160	24	24	22.0	1	62.83	125.66	8	8	7	11	7	31.3	942.70	5.7	0.036	3.9
CSTGH03005D6	3	508.94	54	29	29	26.0	2	63.62	127.23	4	9	10	15	9	34.4	440.10	7.7	0.040	2.9
CSTGH03010D6	3	1017.88	108	29	29	26.0	2	63.62	127.23	8	9	10	15	9	34.4	949.10	7.7	0.040	5.8
CSTGH04005D6	4	502.65	40	39	39	35.0	2	62.83	125.66	4	12	10	15	9	37.5	427.70	7.7	0.045	5.2
CSTGH04010D6	4	1005.31	80	39	39	35.0	2	62.83	125.66	8	12	10	15	9	37.5	930.30	7.7	0.045	10.3
CSTGH05005D6	5	502.65	32	49	49	34.0	3	62.83	125.66	4	12	14	20	13	30.1	442.40	11.7	0.045	6.6
CSTGH05010D6	5	1005.31	64	49	49	34.0	3	62.83	125.66	8	12	14	20	13	30.1	945.00	11.7	0.045	12.9
CSTGH05020D6	5	2010.62	128	49	49	34.0	3	62.83	125.66	16	12	14	20	13	30.1	1950.40	11.7	0.045	25.8
CSTGH06005D6	6	508.94	27	59	59	43.0	3	63.6	127.23	4	16	18	26	17	31.4	446.10	15.7	0.045	9.9
CSTGH06010D6	6	1017.88	54	59	59	43.0	3	63.62	127.23	8	16	18	26	17	31.4	955.00	15.7	0.045	19.7
CSTGH06020D6	6	2035.75	108	59	59	43.0	3	63.62	127.23	16	16	18	26	17	31.4	1973.00	15.7	0.045	39.5
CSTGH08005D6	8	502.65	20	79	79	71.0	4	62.83	125.66	4	25	22	33	21	26.6	449.45	19.7	0.045	21.1
CSTGH08010D6	8	1005.31	40	79	79	71.0	4	62.83	125.66	8	25	22	33	21	26.6	952.00	19.7	0.045	42.1
CSTGH08020D6	8	2010.61	80	79	79	71.0	4	62.83	125.66	16	25	22	33	21	26.6	1957.40	19.7	0.045	84.2
CSTGH10005D6	10	502.65	16	99	99	89	4	62.83	125.66	4	32	33	48	32	125.66	376.98	19.7	0.045	33.1
CSTGH10010D6	10	1005.31	32	99	99	89	4	62.83	125.66	8	32	33	48	32	125.66	753.99	19.7	0.045	66.1
CSTGH12005D6	12	527.79	14	120	120	108.0	4	63.62	127.23	4	40	39	58	38	127.23	381.69	19.7	0.050	53.0
CSTGH12010D6	12	1017.88	27	120	120	108.0	4	63.62	127.23	8	40	39	58	38	127.23	763.42	19.7	0.050	98.3

LSTGH-D6 Straight Teeth Ground Racks

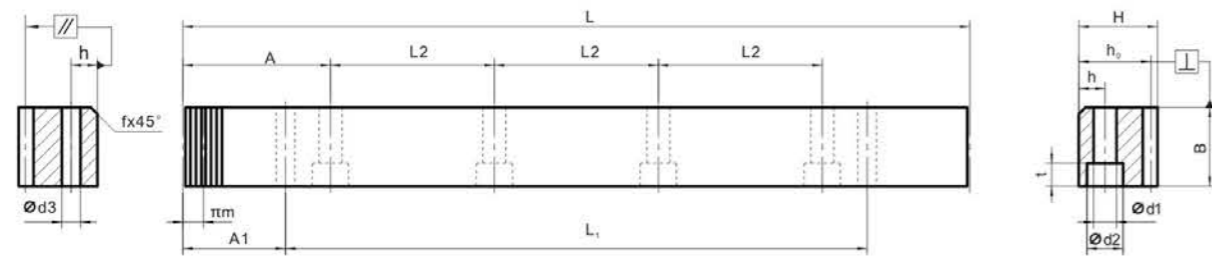
Quality Grade : DIN 6
 Quenched & Tempered : HB220-260
 Material : Super Alloy
 Hardness : HRC58-62
 Pressure Angle : 20°
 Ground on All Sides After Hardening
 Teeth Making : Ground



Code	Module	L	No. of Teeth	B	H	h ₀	f	A	L2	No. of Holes	h	d1	d2	t	A1	L1	d3	FP	kg
LSTGH02005D6	2	502.65	80	24	24	22.0	1	62.83	125.66	4	8	7	11	7	31.3	440.10	5.7	0.036	2.0
LSTGH02010D6	2	1005.31	160	24	24	22.0	1	62.83	125.66	8	8	7	11	7	31.3	942.70	5.7	0.036	3.9
LSTGH03005D6	3	508.94	54	29	29	26.0	2	63.62	127.23	4	9	10	15	9	34.4	440.10	7.7	0.036	2.9
LSTGH03010D6	3	1017.88	108	29	29	26.0	2	63.62	127.23	8	9	10	15	9	34.4	949.10	7.7	0.036	5.8
LSTGH04005D6	4	502.65	40	39	39	35.0	2	62.83	125.66	4	12	10	15	9	37.5	427.70	7.7	0.040	5.2
LSTGH04010D6	4	1005.31	80	39	39	35.0	2	62.83	125.66	8	12	10	15	9	37.5	930.30	7.7	0.040	10.3
LSTGH05005D6	5	502.65	32	49	49	34.0	3	62.83	125.66	4	12	14	20	13	30.1	442.40	11.7	0.045	6.6
LSTGH05010D6	5	1005.31	64	49	49	34.0	3	62.83	125.66	8	12	14	20	13	30.1	945.00	11.7	0.045	12.9
LSTGH06005D6	6	508.94	27	59	59	43.0	3	63.6	127.23	4	16	18	26	17	31.4	446.10	15.7	0.045	9.9
LSTGH06010D6	6	1017.88	54	59	59	43.0	3	63.62	127.23	8	16	18	26	17	31.4	955.00	15.7	0.045	19.7

CSTGH-D7 Straight Gear Shaped Racks

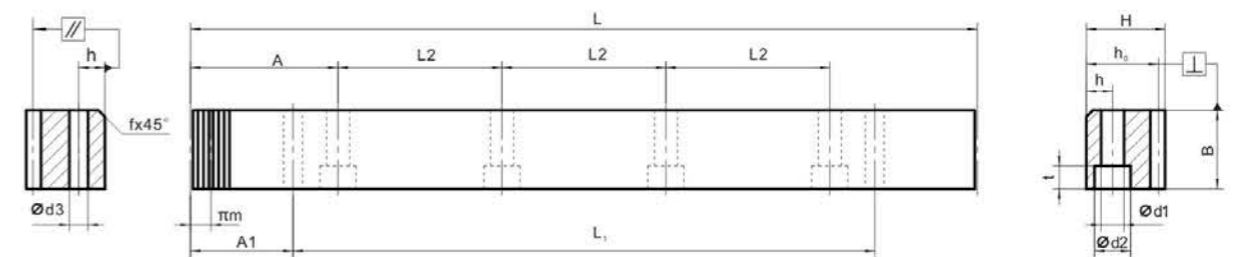
Quality Grade : DIN 7
 Quenched & Tempered : HB220-260
 Material : Carbon Steel
 Hardness : HRC50-55
 Pressure Angle : 20°
 Ground on All Sides After Hardening
 Teeth Making : Ground



Code	Module	L	No. of Teeth	B	H	h _o	f	A	L2	No. of Holes	h	d1	d2	t	A1	L1	d3	FP	kg
CSTGH01005D7	1.0	502.65	160	15	15	14.0	1	62.83	125.66	4	6	5	9	5	31.3	440.10	5.7	0.050	0.8
CSTGH01010D7	1.0	1005.31	320	15	15	14.0	1	62.83	125.66	8	6	5	9	5	31.3	942.70	5.7	0.050	1.6
CSTGH01505D7	1.5	499.51	106	17	17	15.5	1	62.85	124.88	4	7	6	10	6	29	441.51	5.7	0.050	1.0
CSTGH01510D7	1.5	999.03	212	17	17	15.5	1	62.85	124.88	8	7	6	10	6	29	941.00	5.7	0.050	2.1
CSTGH02005D7	2	502.65	80	24	24	22.0	1	62.83	125.66	4	8	7	11	7	31.3	440.10	5.7	0.050	2.0
CSTGH02010D7	2	1005.31	160	24	24	22.0	1	62.83	125.66	8	8	7	11	7	31.3	942.70	5.7	0.050	3.9
CSTGH02020D7	2	2010.62	320	24	24	22.0	1	62.83	125.66	16	8	7	11	7	31.3	1948.00	5.7	0.050	7.8
CSTGH03005D7	3	508.94	54	29	29	26.0	2	63.62	127.23	4	9	10	15	9	34.4	440.10	7.7	0.056	2.9
CSTGH03010D7	3	1017.88	108	29	29	26.0	2	63.62	127.23	8	9	10	15	9	34.4	949.10	7.7	0.056	5.8
CSTGH03020D7	3	2035.75	216	29	29	26.0	2	63.62	127.23	16	9	10	15	9	34.4	1967.00	7.7	0.056	11.9
CSTGH04005D7	4	502.65	40	39	39	35.0	2	62.83	125.66	4	12	10	15	9	37.5	427.70	7.7	0.063	5.2
CSTGH04010D7	4	1005.31	80	39	39	35.0	2	62.83	125.66	8	12	10	15	9	37.5	930.30	7.7	0.063	10.3
CSTGH04020D7	4	2010.62	160	39	39	35.0	2	62.83	125.66	16	12	10	15	9	37.5	1935.60	7.7	0.063	20.5
CSTGH05005D7	5	502.65	32	49	49	34.0	3	62.83	125.66	4	12	14	20	13	30.1	442.40	11.7	0.063	6.6
CSTGH05010D7	5	1005.31	64	49	49	34.0	3	62.83	125.66	8	12	14	20	13	30.1	945.00	11.7	0.063	12.9
CSTGH05020D7	5	2010.62	128	49	49	34.0	3	62.83	125.66	16	12	14	20	13	30.1	1950.40	11.7	0.063	25.8
CSTGH06005D7	6	508.94	27	59	59	43.0	3	63.6	127.23	4	16	18	26	17	31.4	446.10	15.7	0.063	9.9
CSTGH06010D7	6	1017.88	54	59	59	43.0	3	63.62	127.23	8	16	18	26	17	31.4	955.00	15.7	0.063	19.7
CSTGH06020D7	6	2035.75	108	59	59	43.0	3	63.62	127.23	16	16	18	26	17	31.4	1973.00	15.7	0.063	39.5
CSTGH08005D7	8	502.65	20	79	79	71.0	4	62.83	125.66	4	25	22	33	21	26.6	449.45	19.7	0.071	21.1
CSTGH08010D7	8	1005.31	40	79	79	71.0	4	62.83	125.66	8	25	22	33	21	26.6	952.00	19.7	0.071	42.1
CSTGH08020D7	8	2010.61	80	79	79	71.0	4	62.83	125.66	16	25	22	33	21	26.6	1957.40	19.7	0.071	84.2
CSTGH10005D7	10	502.65	16	99	99	89	4	62.83	125.66	4	32	33	48	32	125.66	376.98	19.7	0.071	33.1
CSTGH10010D7	10	1005.31	32	99	99	89	4	62.83	125.66	8	32	33	48	32	125.66	753.99	19.7	0.071	66.1
CSTGH12005D7	12	527.79	14	120	120	108.0	4	63.62	127.23	4	40	39	58	38	127.23	381.69	19.7	0.071	53.0
CSTGH12010D7	12	1017.88	27	120	120	108.0	4	63.62	127.23	8	40	39	58	38	127.23	763.42	19.7	0.071	98.3

CSTSH-D9 Straight Gear Shaped Racks

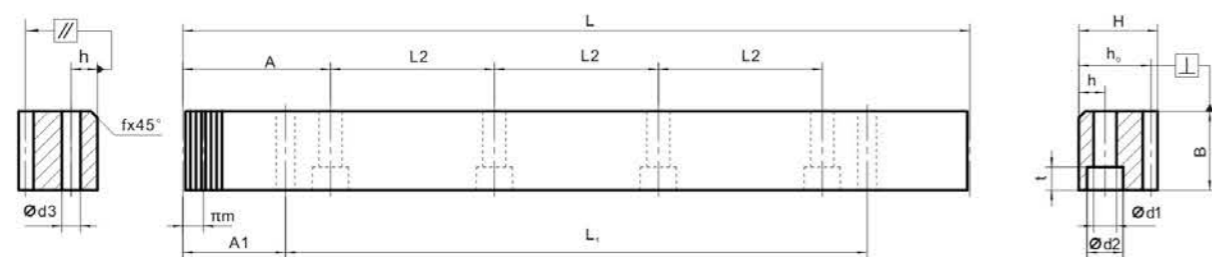
Quality Grade : DIN 9
 Quenched & Tempered : HB220-260
 Material : Carbon Steel
 Hardness : HRC50-55
 Pressure Angle : 20°
 Ground on All Sides After Hardening
 Teeth Making : Shaped



Code	Module	L	No. of Teeth	B	H	h _o	f	A	L2	No. of Holes	h	d1	d2	t	A1	L1	d3	FP	kg
CSTSH01505D7	1.5	499.51	106	17	17	15.5	1	62.85	124.88	4	7	6	10	6	29	441.51	5.7	0.100	1.0
CSTSH01510D7	1.5	999.03	212	17	17	15.5	1	62.85	124.88	8	7	6	10	6	29	941.00	5.7	0.100	2.1
CSTSH02005D7	2	502.65	80	24	24	22.0	1	62.83	125.66	4	8	7	11	7	31.3	440.10	5.7	0.100	2.0
CSTSH02010D7	2	1005.31	160	24	24	22.0	1	62.83	125.66	8	8	7	11	7	31.3	942.70	5.7	0.100	3.9
CSTSH02020D7	2	2010.62	320	24	24	22.0	1	62.83	125.66	16	8	7	11	7	31.3	1948.00	5.7	0.100	7.8
CSTSH03005D7	3	508.94	54	29	29	26.0	2	63.62	127.23	4	9	10	15	9	34.4	440.10	7.7	0.110	2.9
CSTSH03010D7	3	1017.88	108	29	29	26.0	2	63.62	127.23	8	9	10	15	9	34.4	949.10	7.7	0.110	5.8
CSTSH03020D7	3	2035.75	216	29	29	26.0	2	63.62	127.23	16	9	10	15	9	34.4	1967.00	7.7	0.110	11.9
CSTSH04005D7	4	502.65	40	39	39	35.0	2	62.83	125.66	4	12	10	15	9	37.5	427.70	7.7	0.125	5.2
CSTSH04010D7	4	1005.31	80	39	39	35.0	2	62.83	125.66	8	12	10	15	9	37.5	930.30	7.7	0.125	10.3
CSTSH04020D7	4	2010.62	160	39	39	35.0	2	62.83	125.66	16	12	10	15	9	37.5	1935.60	7.7	0.125	20.5
CSTSH05005D7	5	502.65	32	49	49	34.0	3	62.83	125.66	4	12	14	20	13	30.1	442.40	11.7	0.125	6.6
CSTSH05010D7	5	1005.31	64	49	49	34.0	3	62.83	125.66	8	12	14	20	13	30.1	945.00	11.7	0.125	12.9
CSTSH05020D7	5	2010.62	128	49	49	34.0	3	62.83	125.66	16	12	14	20	13	30.1	1950.40	11.7	0.125	25.8
CSTSH06005D7	6	508.94	27	59	59	43.0	3	63.6	127.23	4	16	18	26	17	31.4	446.10	15.7	0.125	9.9
CSTSH06010D7	6	1017.88	54	59	59	43.0	3	63.62	127.23	8	16	18	26	17	31.4	955.00	15.7	0.125	19.7
CSTSH06020D7	6	2035.75	108	59	59	43.0	3	63.62	127.23	16	16	18	26	17	31.4	1973.00	15.7	0.125	39.5

CSTST-D7 Straight Gear Shaped Racks

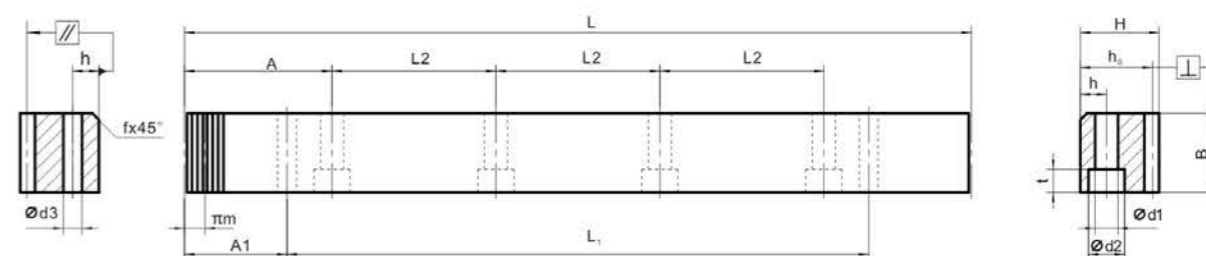
Quality Grade : DIN 7
 Teeth Making : Ground
 Material : Carbon Steel
 Quenched & Tempered : HB220-260
 Pressure Angle : 20°
 Ground on All Sides After Hardening



Code	Module	L	No. of Teeth	B	H	h _o	f	A	L2	No. of Holes	h	d1	d2	t	A1	L1	d3	FP	kg
CSTST01005D7	1.0	502.65	160	15	15	14.0	1	62.83	125.66	4	6	5	9	5	31.3	440.10	5.7	0.050	0.8
CSTST01010D7	1.0	1005.31	320	15	15	14.0	1	62.83	125.66	8	6	5	9	5	31.3	942.70	5.7	0.050	1.6
CSTST01505D7	1.5	499.51	106	17	17	15.5	1	62.85	124.88	4	7	6	10	6	29	441.51	5.7	0.050	1.0
CSTST01510D7	1.5	999.03	212	17	17	15.5	1	62.85	124.88	8	7	6	10	6	29	941.00	5.7	0.050	2.1
CSTST02005D7	2	502.65	80	25	24	22.0	1	62.83	125.66	4	8	7	11	7	31.3	440.10	5.7	0.050	2.0
CSTST02010D7	2	1005.31	160	25	24	22.0	1	62.83	125.66	8	8	7	11	7	31.3	942.70	5.7	0.050	3.9
CSTST02020D7	2	2010.62	320	25	24	22.0	1	62.83	125.66	16	8	7	11	7	31.3	1948.00	5.7	0.050	7.8
CSTST03005D7	3	508.94	54	30	29	26.0	2	63.62	127.23	4	9	10	15	9	34.4	440.10	7.7	0.056	2.9
CSTST03010D7	3	1017.88	108	30	29	26.0	2	63.62	127.23	8	9	10	15	9	34.4	949.10	7.7	0.056	5.8
CSTST03020D7	3	2035.75	216	30	29	26.0	2	63.62	127.23	16	9	10	15	9	34.4	1967.00	7.7	0.056	11.9
CSTST04005D7	4	502.65	40	40	39	35.0	2	62.83	125.66	4	12	10	15	9	37.5	427.70	7.7	0.063	5.2
CSTST04010D7	4	1005.31	80	40	39	35.0	2	62.83	125.66	8	12	10	15	9	37.5	930.30	7.7	0.063	10.3
CSTST04020D7	4	2010.62	160	40	39	35.0	2	62.83	125.66	16	12	10	15	9	37.5	1935.60	7.7	0.063	20.5
CSTST05005D7	5	502.65	32	49	39	34.0	3	62.83	125.66	4	12	14	20	13	30.1	442.40	11.7	0.063	6.6
CSTST05010D7	5	1005.31	64	49	39	34.0	3	62.83	125.66	8	12	14	20	13	30.1	945.00	11.7	0.063	12.9
CSTST05020D7	5	2010.62	128	49	39	34.0	3	62.83	125.66	16	12	14	20	13	30.1	1950.40	11.7	0.063	25.8
CSTST06005D7	6	508.94	27	59	49	43.0	3	63.6	127.23	4	16	18	26	17	31.4	446.10	15.7	0.063	9.9
CSTST06010D7	6	1017.88	54	59	49	43.0	3	63.62	127.23	8	16	18	26	17	31.4	955.00	15.7	0.063	19.7
CSTST06020D7	6	2035.75	108	59	49	43.0	3	63.62	127.23	16	16	18	26	17	31.4	1973.00	15.7	0.063	39.5
CSTST08005D7	8	502.65	20	79	79	71.0	4	62.83	125.66	4	25	22	33	21	26.6	449.45	19.7	0.071	21.1
CSTST08010D7	8	1005.31	40	79	79	71.0	4	62.83	125.66	8	25	22	33	21	26.6	952.00	19.7	0.071	42.1
CSTST08020D7	8	2010.61	80	79	79	71.0	4	62.83	125.66	16	25	22	33	21	26.6	1957.40	19.7	0.071	84.2
CSTST10005D7	10	502.65	16	99	99	89	4	62.83	125.66	4	32	33	48	32	125.66	376.98	19.7	0.071	33.1
CSTST10010D7	10	1005.31	32	99	99	89	4	62.83	125.66	8	32	33	48	32	125.66	753.99	19.7	0.071	66.1
CSTST12005D7	12	527.79	14	120	120	108.0	4	63.62	127.23	4	40	39	58	38	127.23	381.69	19.7	0.071	53.0
CSTST12010D7	12	1017.88	27	120	120	108.0	4	63.62	127.23	8	40	39	58	38	127.23	763.42	19.7	0.071	98.3

CSTMT-D8 Straight Milled Racks

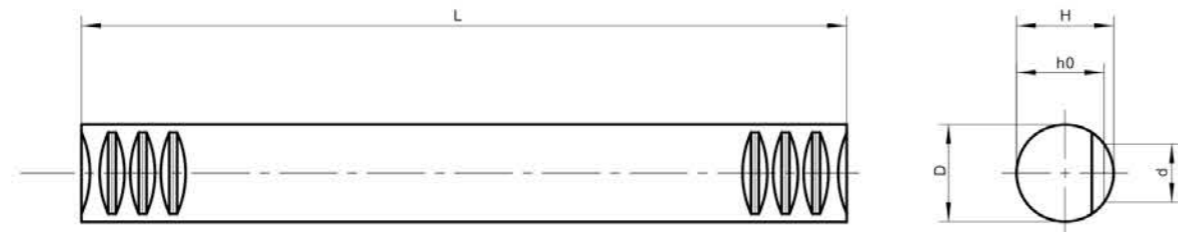
Quality Grade : DIN 8
 Teeth Making : Milled
 Material : Carbon Steel
 Quenched & Tempered : HB220-260
 Pressure Angle : 20°
 Ground on All Sides After Hardening



Code	Module	L	No. of Teeth	B	H	h _o	f	A	L2	No. of Holes	h	d1	d2	t	A1	L1	d3	FP	kg
CSTMT01505D8	1.5	499.51	106	17	17	15.5	1	62.85	124.88	4	7	6	10	6	29	441.51	5.7	0.071	1.0
CSTMT01510D8	1.5	999.03	212	17	17	15.5	1	62.85	124.88	8	7	6	10	6	29	941.00	5.7	0.071	2.1
CSTMT02005D8	2	502.65	80	25	24	22.0	1	62.83	125.66	4	8	7	11	7	31.3	440.10	5.7	0.071	2.0
CSTMT02010D8	2	1005.31	160	25	24	22.0	1	62.83	125.66	8	8	7	11	7	31.3	942.70	5.7	0.071	3.9
CSTMT02020D8	2	2010.62	320	25	24	22.0	1	62.83	125.66	16	8	7	11	7	31.3	1948.00	5.7	0.071	7.8
CSTMT03005D8	3	508.94	54	30	29	26.0	2	63.62	127.23	4	9	10	15	9	34.4	440.10	7.7	0.080	2.9
CSTMT03010D8	3	1017.88	108	30	29	26.0	2	63.62	127.23	8	9	10	15	9	34.4	949.10	7.7	0.080	5.8
CSTMT03020D8	3	2035.75	216	30	29	26.0	2	63.62	127.23	16	9	10	15	9	34.4	1967.00	7.7	0.080	11.9
CSTMT04005D8	4	502.65	40	40	39	35.0	2	62.83	125.66	4	12	10	15	9	37.5	427.70	7.7	0.090	5.2
CSTMT04010D8	4	1005.31	80	40	39	35.0	2	62.83	125.66	8	12	10	15	9	37.5	930.30	7.7	0.090	10.3
CSTMT04020D8	4	2010.62	160	40	39	35.0	2	62.83	125.66	16	12	10	15	9	37.5	1935.60	7.7	0.090	20.5
CSTMT05005D8	5	502.65	32	49	39	34.0	3	62.83	125.66	4	12	14	20	13	30.1	442.40	11.7	0.090	6.6
CSTMT05010D8	5	1005.31	64	49	39	34.0	3	62.83	125.66	8	12	14	20	13	30.1	945.00	11.7	0.090	12.9
CSTMT05020D8	5	2010.62	128	49	39	34.0	3	62.83	125.66	16	12	14	20	13	30.1	1950.40	11.7	0.090	25.8
CSTMT06005D8	6	508.94	27	59	49	43.0	3	63.6	127.23	4	16	18	26	17	31.4	446.10	15.7	0.090	9.9
CSTMT06010D8	6	1017.88	54	59	49	43.0	3	63.62	127.23	8	16	18	26	17	31.4	955.00	15.7	0.090	19.7
CSTMT06020D8	6	2035.75	108	59	49	43.0	3	63.62	127.23	16	16	18	26	17	31.4	1973.00	15.7	0.090	39.5
CSTMT08005D8	8	502.65	20	79	79	71.0	4	62.83	125.66	4	25	22	33	21	26.6	449.45	19.7	0.100	21.1
CSTMT08010D8	8	1005.31	40	79	79	71.0	4	62.83	125.66	8	25	22	33	21	26.6	952.00	19.7	0.100	42.1
CSTMT08020D8	8	2010.61	80	79	79	71.0	4	62.83	125.66	16	25	22	33	21	26.6	1957.40	19.7	0.100	84.2
CSTMT10005D8	10	502.65	16	99	99	89	4	62.83	125.66	4	32	33	48	32	125.66	376.98	19.7	0.100	33.1
CSTMT10010D8	10	1005.31	32	99	99	89	4	62.83	125.66	8	32	33	48	32	125.66	753.99	19.7	0.100	66.1
CSTMT12005D8	12	527.79	14	120	120	108.0	4	63.62	127.23	4	40	39	58	38	127.23	381.69	19.7	0.100	53.0
CSTMT12010D8	12	1017.88	27	120	120	108.0	4	63.62	127.23	8	40	39	58	38	127.23	763.42	19.7	0.100	98.3

CSCST-D7 Straight Gear Shaped Racks

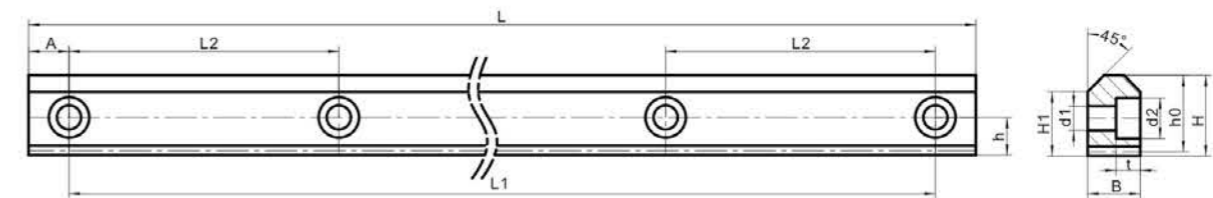
Quality Grade : DIN 7	Teeth Making : Shaped
Material : Carbon Steel	Quenched & Tempered : HB220-260
Pressure Angle : 20°	Ground on All External Sides



Code	Module	L	No. of Teeth	D	H	h ₀	b	FP	kg
CSCST01005D7	1.0	499.51	159	15	15	14	7.5	0.05	0.66
CSCST01010D7	1.0	999.03	318	15	15	14	7.5	0.05	1.35
CSCST01505D7	1.5	499.51	106	17	17	15.5	9.6	0.050	0.84
CSCST01510D7	1.5	999.03	212	17	17	15.5	9.6	0.050	1.70
CSCST02005D7	2	502.65	80	20	20	18.0	12	0.050	1.10
CSCST02010D7	2	1005.31	159	20	20	18.0	12	0.050	2.20
CSCST02505D7	2.5	502.7	64	25	25	22.5	15	0.050	1.80
CSCST02510D7	2.5	997.5	127	25	25	22.5	15	0.050	3.60
CSCST03005D7	3	499.51	53	30	30	27.0	18	0.056	2.50
CSCST03010D7	3	999.00	106	30	30	27.0	18	0.056	5.10
CSCST04005D7	4	502.65	40	40	40	36.0	24	0.063	4.50
CSCST04010D7	4	1005.31	80	40	40	36.0	24	0.063	9.10
CSCST05005D7	5	502.65	32	50	50	45.0	30	0.063	7.10
CSCST05010D7	5	1005.31	64	50	50	45.0	30	0.063	14.30

MSVGH-CP-D6 Straight V-Type Guideway Racks

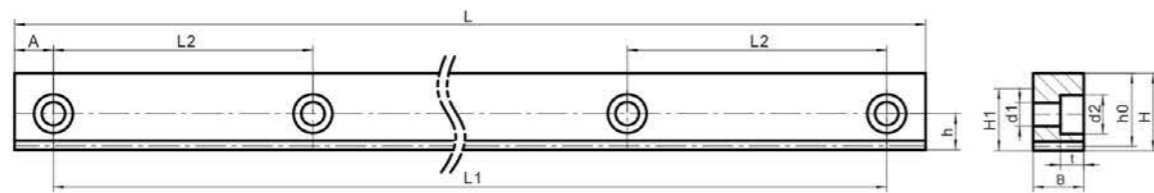
Quality Grade : DIN 6	Quenched & Tempered : HB220-260
Material : Alloy Steel	Hardness : HRC50-55
Pressure Angle : 20°	6 Sides Ground After Hardening
Teeth Making : Ground	



Code	CP	No. of Teeth	L	L1	B	H	H1	h ₀	A	L2	No. of Holes	h	d1	d2	t	FP	kg
MSVGH-CP05010-1-D6	5	206	1030	1000	14.5	24.5	20	22.91	15	100	11	11.5	7	11	7	0.036	2.2
MSVGH-CP05010-2-D6	5	206	1030	1000	19.5	29.5	23.5	27.91	15	100	11	14	9	15	9	0.036	3.5
MSVGH-CP07512-D6	7.5	160	1230	1200	24.7	33.3	25.2	30.61	15	100	13	14.5	9	15	9	0.036	5.8
MSVGH-CP05012-D6	10	120	1230	1200	34.6	46.6	36.7	43.42	15	100	13	18	11	18	11	0.036	11.7

MSTGH-CP-D6 Straight Teeth Guideway Racks

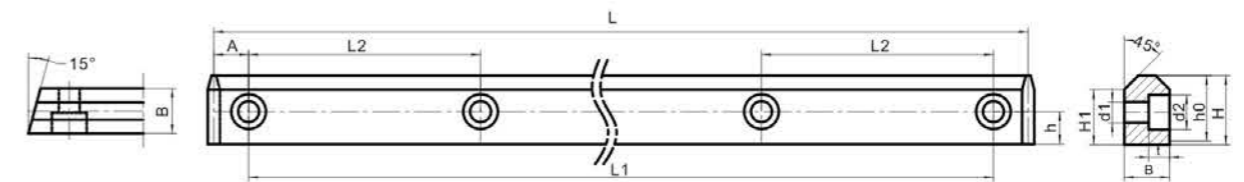
Quality Grade : DIN 6	Quenched & Tempered : HB220-260
Material : Alloy Steel	Hardness : HRC50-55
Pressure Angle : 20°	6 Sides Ground After Hardening
Teeth Making : Ground	



Code	CP	No. of Teeth	L	L1	B	H	H1	h _o	A	L2	No. of Holes	h	d1	d2	t	FP	kg
MSTGH-CP05010-1-D6	5	206	1030	1000	14.5	24.5	20	22.91	15	100	11	11.5	7	11	7	0.036	2.2
MSTGH-CP05010-2-D6	5	206	1030	1000	19.5	29.5	23.5	27.91	15	100	11	14	9	15	9	0.036	3.5
MSTGH-CP07512-D6	7.5	160	1230	1200	24.7	33.3	25.2	30.61	15	100	13	14.5	9	15	9	0.036	5.8
MSTGH-CP05012-D6	10	120	1230	1200	34.6	46.6	36.7	43.42	15	100	13	18	11	18	11	0.036	11.7

MNVGH-D6 V-Type Guideway Racks

Quality Grade : DIN 6	Hardness : HRC50-55
Material : Alloy Steel	6 Sides Ground After Hardening
Quenched & Tempered : HB220-260	



Code	L	L1	B	H	H1	A	L2	No. of Holes	h	d1	d2	t	kg
MNVGH10-1-D6	1030	1000	14.5	24.5	20	15	100	11	11.5	7	11	7	2.3
MNVGH10-2-D6	1030	1000	19.5	29.5	23.5	15	100	11	14	9	15	9	3.6
MNVGH12-3-D6	1230	1200	24.7	33.3	25.2	15	100	13	14.5	9	15	9	6.3
MNVGH12-4-D6	1230	1200	34.6	46.6	36.7	15	100	13	18	11	18	11	12.5

MNTGH-D6 Ground Guideway Racks

Quality Grade : DIN 6

Hardness : HRC50-55

Material : Alloy Steel

6 Sides Ground After Hardening

Quenched & Tempered : HB220-260



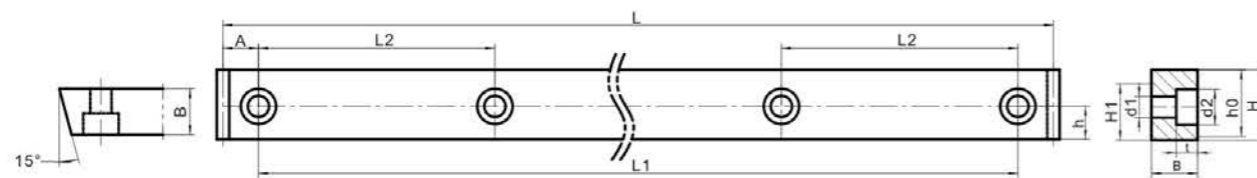
Chromium



Induction Hardening



Ground



Code	L	L1	B	H	H1	A	L2	No. of Holes	h	d1	d2	t	kg
MNTGH10-1-D6	1030	1000	14.5	24.5	20	15	100	11	11.5	7	11	7	2.3
MNTGH10-2-D6	1030	1000	19.5	29.5	23.5	15	100	11	14	9	15	9	3.6
MNTGH12-3-D6	1230	1200	24.7	33.3	25.2	15	100	13	14.5	9	15	9	6.3
MNTGH12-4-D6	1230	1200	34.6	46.6	36.7	15	100	13	18	11	18	11	12.5

MHVGH-D6 Helical V-Type Guideway Racks

Quality Grade : DIN 6

Quenched & Tempered : HB220-260

Material : Alloy Steel

Hardness : HRC50-55

Pressure Angle : 20°

6 Sides Ground After Hardening

Teeth Making : Ground



Chromium



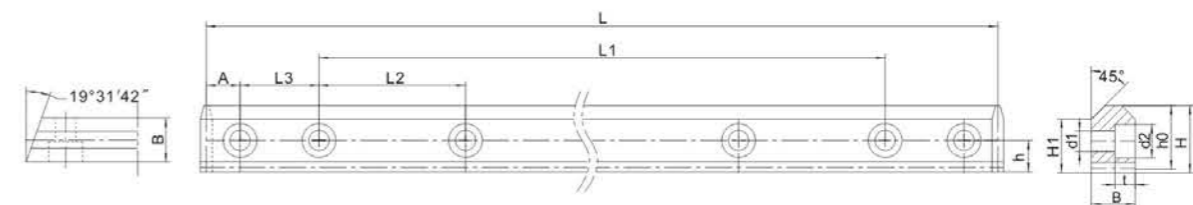
Induction Hardening



Helical

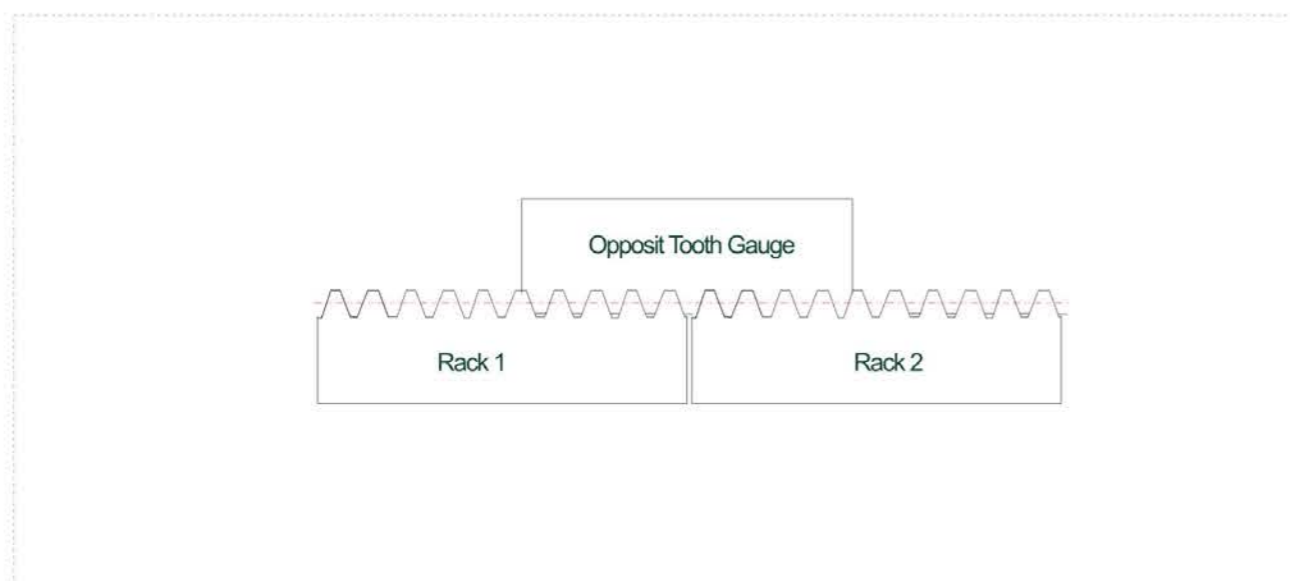


Ground

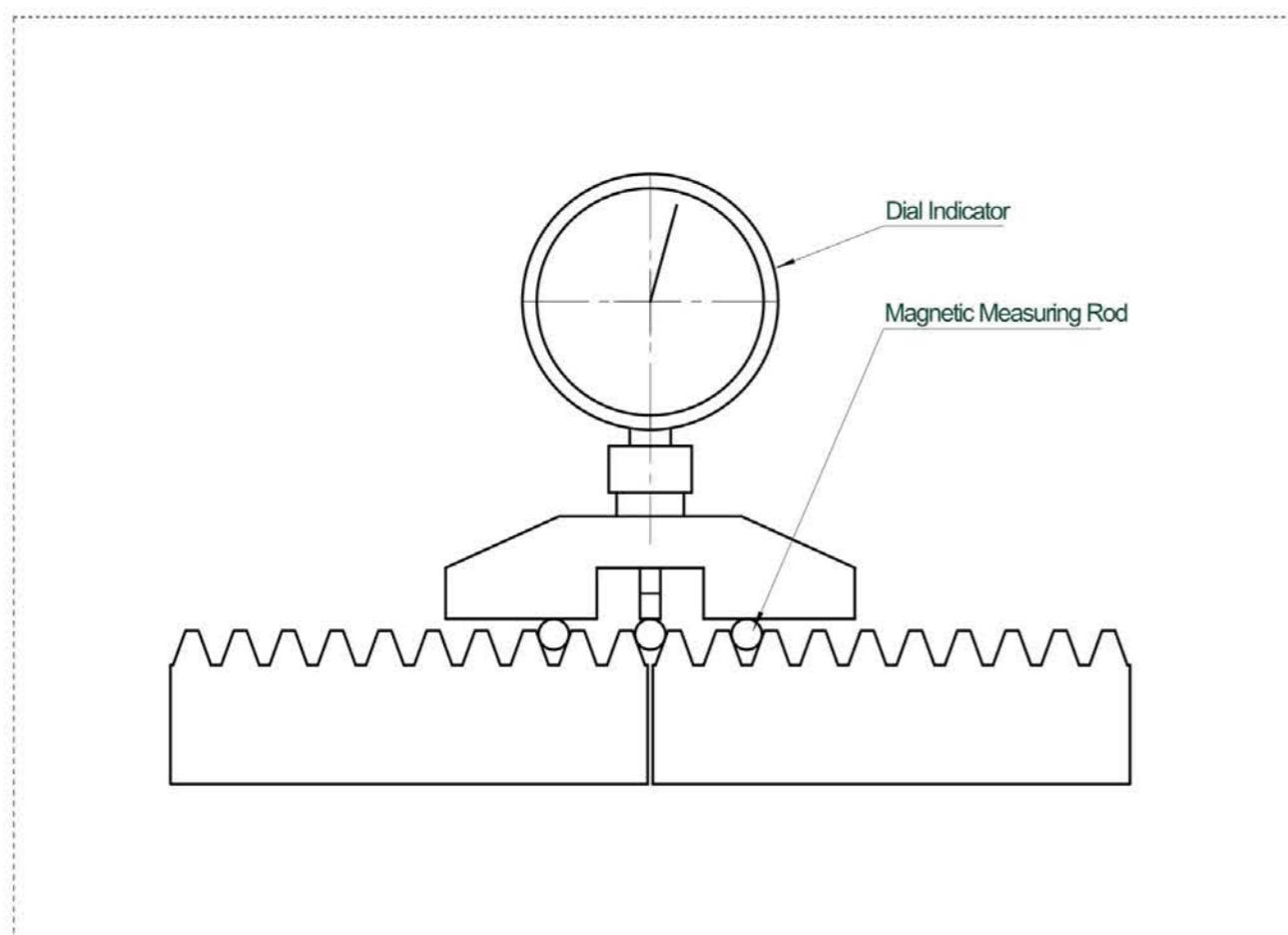


Code	Module	No. of Teeth	L	L1	L2	L3	B	H	H1	h ₀	A	No. of Holes	h	d1	d2	t	Fp	kg
MHVGH01512-1-D6	1.5	240	1200	1100	100	35	14.5	24.5	20	22.91	15	11	11.5	7	11	7	0.036	2.2
MHVGH01512-2-D6	1.5	240	1200	1000	100	35	19.5	29.5	23.5	27.91	15	11	14	9	15	9	0.036	3.5
MHVGH02512-D6	2.5	144	1200	1200	100	35	24.7	33.3	25.2	30.61	15	13	14.5	9	15	9	0.036	5.8
MHVGH03012-D6	3	120	1200	1200	100	35	34.6	46.6	36.7	43.42	15	13	18	11	18	11	0.036	11.7

Assembly Instructions



The figure above shows how to use the Opposit teeth gauge to connect two racks to a standard pitch. To check the Opposit tooth gauge accuracy, use the gauge shown in the figure below to measure.

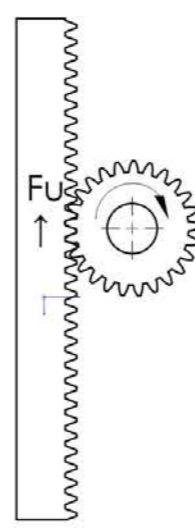


Allowable Maximum Driving Force of The Rack (Fu)

Unit: N

Module	Tooth Flank Width	Tooth Type	Carbon Steel			Alloy Steel		Super Alloy
			Normalization	Tempering	Induction Hardening	Tempering	Induction Hardening	Carburizing Quenching
M1	15	Helical	536	880	1760	1140	2280	
		Helical	640	1056	2110	1368	2730	
M1.5	19	Straight	1060	1600	3200	2080	4160	4368
		Helical	1270	1920	3840	2496	4992	5240
M2	24	Straight	1920	2720	6800	3540	7620	8000
		Helical	2400	2920	7200	4240	8680	9120
M2.5	25	Straight	3040	3840	7360	4608	8832	9270
		Helical	3640	4600	8800	5060	9715	10200
M3	29	Straight	4480	6266	12530	7520	13430	14100
		Helical	5010	6530	13066	7890	14100	16130
M4	39	Straight	8300	11500	23000	13800	25300	26600
		Helical	9300	11800	24000	15180	29140	30600
M5		Straight	12800	14720	28000	17660	30470	32000
		Helical	14400	16190	30800	19430	33520	35200
M6		Straight	18600	22300	39300	26760	47160	48000
		Helical	20930	24550	43230	29430	51870	54600
M8		Straight	34000	40800	75000	48960	90000	94500
		Helical	15.7	44880	82500	53850	99000	103950
M10		Straight	40000	48000	100000	57600	120000	130000
		Helical		52800	110000	63360	132000	143000

The data in the table is the tooth failure load of the rack under the condition of good grease lubrication, V=1.5m/s, gear hardening, and gear single-sided arm support.



$F_u = m \times g + m \times a$	Vertical Movement (n)
$F_u = m \times g \times \mu + m \times a$	Horizontal Movement (n)
$T = F_u \times d / 2000$	Torque (nm)
$a = V / t_b$	Acceleration
V(m/s)	Running Speed
t _b (s)	Acceleration Time
m(kg)	Mobile Quality
g	Gravitational Acceleration 9.81m/s ²
μ	Friction Coefficient
d(mm)	Gear Pitch Diameter

Pinion Code Instruction

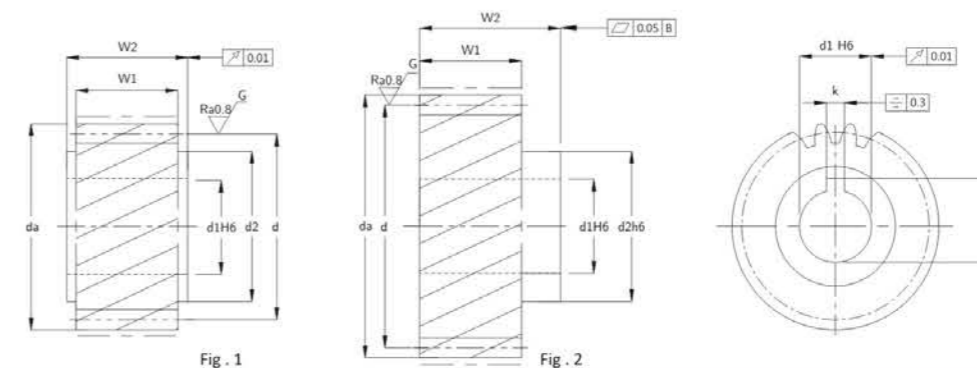


- High Precision
- High Torque
- High Efficiency
- High Quality
- Long Life
- Quick Delivery

1st	2nd	3rd	4th	5th	6th	7th	8th	9th	10th
Material	Type	Series	Teeth Treatment	Hardness	Module Circular Pitch	No. of Teeth	Series	Fig	Grade
C	S	F	G	H	020	030	1	1	DIN JIS
C=Carbon Steel M=Alloy Steel	S=Straight H=Helical	F=Flange	G=Ground S=Skiving M=Milled	H=Induction Hardening	M1.5~M10 CP5-CP20	12~120	1~11	1, 2	DIN 6-10 JIS 2-4

MHGH-DIN6 Helical Teeth Ground Pinions Quality Grade

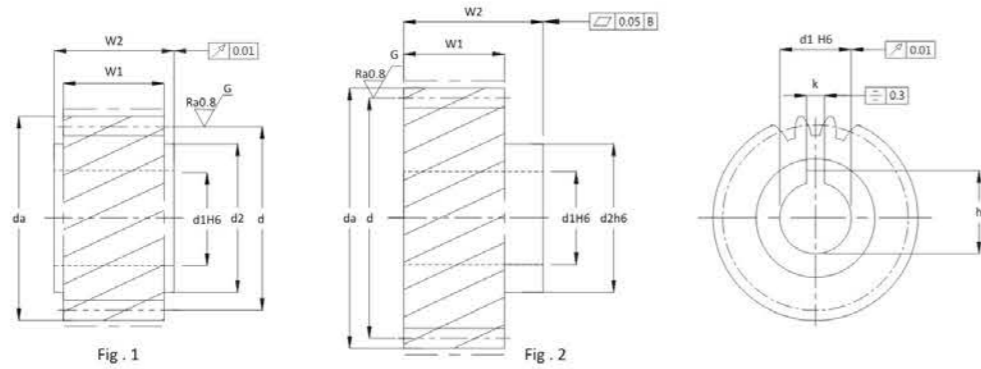
Quality Grade : DIN 6 Hardness : HRC 58~62°
 Material : Alloy Steel Heat Treatment Method : Carburizing and Quenching
 Left Hand Angle : 19°31'42"



Code	Fig.	DIN	No. of Teeth	d1	d2	d Pitch Circle Diameter PCD	da Diameter of Addendum Circle	W1	W2	k	h	F _{max} kN Max. TORQUE Feed-Force	KG
Module 1.5													
MHGH0150201	1	-DIN6	20	11	25	31.83	34.83	20	22	4	12.8	4.48	0.10
MHGH0150202	1	-DIN6	20	13	25	31.83	34.83	20	22	5	15.3	4.48	0.10
MHGH0150203	1	-DIN6	20	14	25	31.83	34.83	20	22	5	16.3	4.48	0.10
MHGH0150204	1	-DIN6	20	16	25	31.83	34.83	20	22	5	18.3	4.48	0.10
MHGH0150205	2	-DIN6	20	16	25	31.83	34.83	20	30	5	18.3	4.48	0.11
MHGH0150206	2	-DIN6	20	16	24	31.83	34.83	20	50	*	*	4.48	0.15
MHGH0150211	2	-DIN6	21	16	30	33.42	36.42	20	46	5	18.3	5.29	0.30
MHGH0150221	2	-DIN6	22	16	25	35.01	38.01	20	30	5	18.3	5.56	0.14
MHGH0150222	2	-DIN6	22	16	24	35.01	38.01	20	50	*	*	5.56	0.18
MHGH0150251	2	-DIN6	25	16	30	39.78	42.78	20	46	5	18.3	6.37	0.18
MHGH0150252	2	-DIN6	25	16	25	39.79	42.79	20	30	5	18.3	6.37	0.18
MHGH0150253	2	-DIN6	25	16	24	39.79	42.79	20	50	*	*	6.37	0.22
MHGH0150301	2	-DIN6	30	16	25	47.75	50.75	20	30	5	18.3	7.12	0.27
MHGH0150302	2	-DIN6	30	16	24	47.75	50.75	20	50	*	*	7.12	0.31
Module 2													
MHGH0200181	1	-DIN6	18	16	25	38.197	42.20	28	30	5	18.3	7.47	0.20
MHGH0200201	1	-DIN6	20	19	30	42.44	46.40	28	30	6	21.8	8.36	0.20
MHGH0200202	2	-DIN6	20	19	30	42.44	46.40	28	56	6	21.8	8.36	0.20
MHGH0200203	1	-DIN6	20	20	30	42.44	46.40	28	30	6	22.8	8.36	0.20
MHGH0200204	2	-DIN6	20	22	36	42.44	46.40	28	56	6	24.8	8.36	0.20
MHGH0200205	1	-DIN6	20	22	30	42.44	46.40	28	30	6	24.8	8.36	0.20
MHGH0200206	2	-DIN6	20	22	36	42.44	46.40	28	36	6	24.8	8.36	0.20
MHGH0200207	2	-DIN6	20	22	35	42.44	46.44	25	40	6	24.8	8.36	0.26
MHGH0200208	2	-DIN6	20	22	30	42.44	46.44	25	60	*	*	8.36	0.29
MHGH0200211	1	-DIN6	21	16	25	44.56	48.60	28	30	5	18.3	8.81	0.30
MHGH0200212	2	-DIN6	21	22	36	44.56	48.60	28	30	6	24.8	8.81	0.30
MHGH0200221	1	-DIN6	22	19	30	46.69	50.70	28	30	6	21.8	10.38	0.30
MHGH0200222	2	-DIN6	22	19	30	46.69	50.70	28	56	6	21.8	10.38	0.30
MHGH0200223	1	-DIN6	22	22	30	46.69	50.70	28	30	6	24.8	10.38	0.30
MHGH0200224	2	-DIN6	22	22	36	46.69	50.70	28	56	6	24.8	10.38	0.30
MHGH0200225	2	-DIN6	22	22	35	46.69	50.69	25	40	6	24.8	9.27	0.32
MHGH0200226	2	-DIN6	22	22	35	46.69	50.69	25	60	*	*	9.27	0.35
MHGH0200251	1	-DIN6	25	19	30	53.05	57.10	28	30	6	21.8	11.90	0.40
MHGH0200252	2	-DIN6	25	19	30	53.05	57.10	28	56	6	21.8	11.90	0.40
MHGH0200253	1	-DIN6	25	20	30	53.05	57.10	28	30	6	22.8	11.90	0.40
MHGH0200254	1	-DIN6	25	22	30	53.05	57.10	28	30	6	24.8	11.90	0.40
MHGH0200255	2	-DIN6	25	22	36	53.05	57.10	28	56	6	24.8	11.90	0.40
MHGH0200256	1	-DIN6	25	25	36	53.05	57.10	28	30	6	27.8	11.90	0.40
MHGH0200257	2	-DIN6	25	22	35	53.05	57.05	25	40	6	24.8	10.62	0.42
MHGH0200258	2	-DIN6	25	22	30	53.05	57.05	25	60	*	*	10.62	0.45
MHGH0200281	1	-DIN6	28	19	30	59.42	63.40	28	30	6	21.8	13.06	0.40
MHGH0200282	2	-DIN6	28	19	30	59.42	63.40	28	56	6	21.8	13.06	0.40
MHGH0200283	1	-DIN6	28	22	30	59.42	63.40	28	30	6	24.8	13.06	0.40
MHGH0200284	2	-DIN6	28	22	36	59.42	63.40	28	56	6	24.8	13.06	0.40

MHGH-DIN6 Helical Teeth Ground Pinions Quality Grade

Quality Grade : DIN 6 Hardness : HRC 58~62°
 Material : Alloy Steel Heat Treatment : Carburizing and Quenching
 Left Hand Angle : 19°31'42"



Code	Fig.	DIN	No. of Teeth	d1	d2	d Pitch Circle Diameter PCD	da Diameter of Addendum Circle	W1	W2	k	h	F _{t,kN} Max. TORQUE* Feed-Force	KG
------	------	-----	--------------	----	----	--------------------------------	-----------------------------------	----	----	---	---	---	----

Module 2

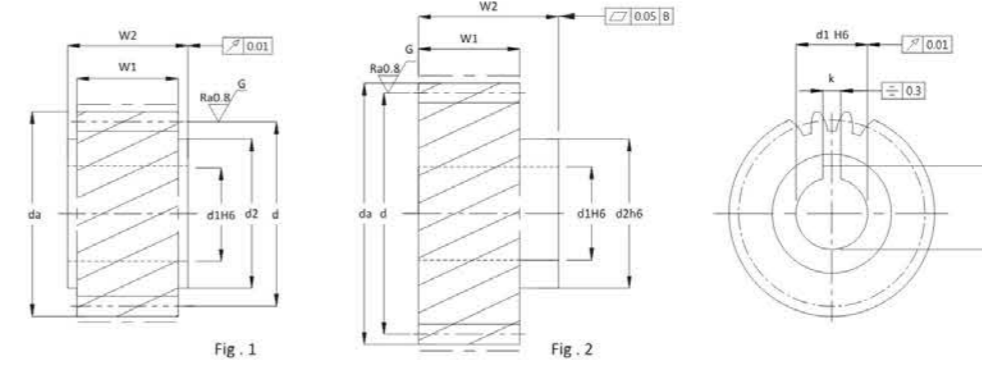
MHGH0200285	1	-DIN6	28	35	48	59.42	63.40	28	30	10	38.3	13.06	0.40
MHGH0200301	1	-DIN6	30	16	25	63.66	67.70	28	30	5	18.3	13.30	0.70
MHGH0200302	1	-DIN6	30	20	30	63.66	67.70	28	30	6	22.8	13.30	0.70
MHGH0200303	2	-DIN6	30	22	36	63.66	67.70	28	56	6	24.8	13.30	0.70
MHGH0200304	1	-DIN6	30	25	36	63.66	67.70	28	30	8	28.3	13.30	0.70
MHGH0200305	1	-DIN6	30	30	45	63.66	67.70	28	30	8	33.3	13.30	0.70
MHGH0200306	2	-DIN6	30	30	50	63.66	67.70	28	60	8	33.3	13.30	0.70
MHGH0200307	2	-DIN6	30	32	55	63.66	67.70	28	65	10	35.3	13.30	0.70
MHGH0200308	2	-DIN6	30	22	35	63.66	67.66	25	40	6	24.8	11.87	0.61
MHGH0200309	2	-DIN6	30	22	30	63.66	67.66	25	60	*	*	11.87	0.64
MHGH0200321	1	-DIN6	32	20	30	67.91	71.90	28	30	6	22.8	13.49	0.70
MHGH0200322	1	-DIN6	32	22	30	67.91	71.90	28	30	6	24.8	13.49	0.70
MHGH0200323	2	-DIN6	32	22	36	67.91	71.90	28	56	6	24.8	13.49	0.70
MHGH0200324	1	-DIN6	32	25	36	67.91	71.90	28	30	8	28.3	13.49	0.70
MHGH0200325	1	-DIN6	32	35	48	67.91	71.90	28	30	10	38.3	13.49	0.70
MHGH0200361	1	-DIN6	36	35	48	76.39	80.40	28	30	10	38.3	13.84	0.80
MHGH0200391	2	-DIN6	39	32	55	82.76	86.80	28	65	10	35.3	14.06	1.40
MHGH0200401	1	-DIN6	40	35	48	84.88	88.90	28	30	10	38.3	14.13	1.20

Module 3

MHGH0300181	1	-DIN6	18	25	36	54.00	60.00	28	30	8	28.3	12.51	0.40
MHGH0300201	1	-DIN6	20	25	36	60.00	66.00	28	30	8	28.3	14.00	0.50
MHGH0300202	2	-DIN6	20	25	44	63.66	69.70	28	60	8	28.3	14.00	1.10
MHGH0300203	1	-DIN6	20	30	45	63.66	69.70	28	30	8	33.3	14.00	0.50
MHGH0300204	2	-DIN6	20	30	50	63.66	69.70	28	60	8	33.3	14.00	1.10
MHGH0300205	2	-DIN6	20	32	55	63.66	69.70	28	65	10	35.3	14.00	1.20
MHGH0300206	1	-DIN6	20	35	48	63.66	69.70	28	30	10	38.3	14.00	0.50
MHGH0300207	2	-DIN6	20	22	35	63.66	69.66	30	40	6	24.8	15.06	0.69
MHGH0300208	2	-DIN6	20	22	30	63.66	69.66	30	65	*	*	15.06	0.74
MHGH0300209	2	-DIN6	20	32	50	63.66	69.66	30	60	10	35.3	15.06	0.81
MHGH03002010	2	-DIN6	20	32	44	63.66	69.66	30	70	*	*	15.06	0.78
MHGH0300221	1	-DIN6	22	25	36	70.03	76.00	28	30	8	28.3	17.65	0.60
MHGH0300222	1	-DIN6	22	30	45	70.03	76.00	28	30	8	33.3	17.65	0.60
MHGH0300223	2	-DIN6	22	32	55	70.03	76.00	28	65	10	35.3	17.65	1.40
MHGH0300224	1	-DIN6	22	35	48	70.03	76.00	28	30	10	38.3	17.65	0.60
MHGH0300225	2	-DIN6	22	40	62	70.03	76.00	28	65	12	43.3	17.65	1.40
MHGH0300226	2	-DIN6	22	22	35	70.03	76.03	30	40	6	24.8	16.68	0.85
MHGH0300227	2	-DIN6	22	22	30	70.03	76.03	30	65	*	*	16.68	0.90
MHGH0300228	2	-DIN6	22	32	50	70.03	76.03	30	60	10	35.3	16.68	0.96
MHGH0300229	2	-DIN6	22	32	44	70.03	76.03	30	70	*	*	16.68	0.93
MHGH0300251	2	-DIN6	25	22	36	79.58	85.60	28	56	6	24.8	19.01	1.50
MHGH0300252	1	-DIN6	25	25	36	79.58	85.60	28	30	8	28.3	19.01	0.80
MHGH0300253	2	-DIN6	25	25	44	79.58	85.60	28	60	8	28.3	19.01	1.60
MHGH0300254	1	-DIN6	25	30	45	79.58	85.60	28	30	8	33.3	19.01	0.80
MHGH0300255	2	-DIN6	25	30	50	79.58	85.60	28	60	8	33.3	19.01	1.60

MHGH-DIN6 Helical Teeth Ground Pinions Quality Grade

Quality Grade : DIN 6 Hardness : HRC 58~62°
 Material : Alloy Steel Heat Treatment : Carburizing and Quenching
 Left Hand Angle : 19°31'42"



Code	Fig.	DIN	No. of Teeth	d1	d2	d Pitch Circle Diameter PCD	da Diameter of Addendum Circle	W1	W2	k	h	F _{t,kN} Max. TORQUE* Feed-Force	KG
------	------	-----	--------------	----	----	--------------------------------	-----------------------------------	----	----	---	---	---	----

Module 3

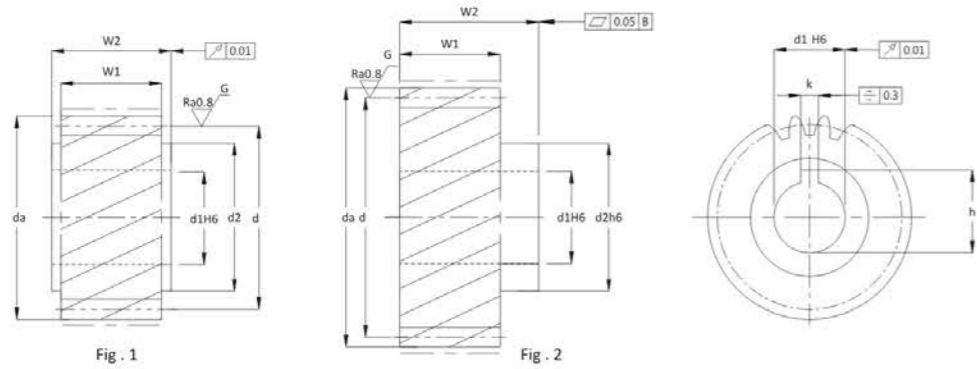
MHGH0300256	2	-DIN6	25	32	55	79.58	85.60	28	65	10	35.3	19.01	1.80
MHGH0300257	1	-DIN6	25	35	48	79.58	85.60	28	30	10	38.3	19.01	0.80
MHGH0300258	2	-DIN6	25	35	55	79.58	85.60	28	65	10	38.3	19.01	1.80
MHGH0300259	1	-DIN6	25	40	70	79.58	85.60	28	50	12	43.3	19.01	1.40
MHGH03002510	2	-DIN6	25	40	62	79.58	85.60	28	65	12	43.3	19.01	1.80
MHGH03002511	2	-DIN6	25	22	35	79.58	85.58	30	40	6	24.8	20.37	1.11
MHGH03002512	2	-DIN6	25	22	30	79.58	85.58	30	65	*	*	20.37	1.17
MHGH03002513	2	-DIN6	25	32	50	79.58	85.58	30	60	10	35.3	20.37	1.23
MHGH03002514	2	-DIN6	25	32	44	79.58	85.58	30	70	*	*	20.37	1.20
MHGH0300281	2	-DIN6	28	32	55	89.13	95.10	28	65	10	35.3	19.59	2.20
MHGH0300282	2	-DIN6	28	40	62	89.13	95.10	28	65	12	43.3	19.59	2.20
MHGH0300301	2	-DIN6	30	22	35	95.49	101.49	30	40	6	24.8	21.37	1.62
MHGH0300302	2	-DIN6	30	22	30	95.49	101.49	30	65	*	*	21.37	1.67
MHGH0300303	2	-DIN6	30	32	50	95.49	101.49	30	60	10	35.3	21.37	1.74
MHGH0300304	2	-DIN6	30	32	44	95.49	101.49	30	70	*	*	21.37	1.71
MHGH0300321	2	-DIN6	32	32	55	101.86	107.85	28	65	10	35.3	20.24	2.80
MHGH0300322	2	-DIN6	32	40	62	101.86	107.85	28	65	12	43.3	20.24	2.00

Module 4

MHGH0400151	1	-DIN6	15	35	52	63.66	71.70	40	50	10	38.3	17.53	0.80
MHGH0400181	2	-DIN6	18	32	55	76.39	84.40	40	75	10	35.3	23.92	1.60
MHGH0400201	1	-DIN6	20	35	52	84.88	92.90	40	50	10	38.3	26.78	1.30
MHGH0400202	1	-DIN6	20	45	65	84.88	92.90	40	50	14	48.8	26.78	1.30
MHGH0400203	2	-DIN6	20	32	50	84.88	92.88	40	60	10	35.3	26.78	1.67
MHGH0400204	2	-DIN6	20	32	44	84.88	92.88	40	80	*	*	26.78	1.73
MHGH0400205	2	-DIN6	20	40	60	84.88	92.88	40	85	12	43.3	26.78	1.89
MHGH0400206	2	-DIN6	20	40	50	84.88	92.88	40	85	*	*	26.78	1.58
MHGH0400211	2	-DIN6	21	32	55	89.13	97.10	40	75	10	35.3	28.23	2.20
MHGH0400212	2	-DIN6	21	35	55	89.13	97.10	40	75	10	38.3	28.23	2.20
MHGH0400213	2	-DIN6	21	40	62	89.13	97.10	40	75	12	43.3	28.23	2.20
MHGH0400214	2	-DIN6	21	45	68	89.13	97.10	40	75	14	48.8	28.23	2.20
MHGH0400221	1	-DIN6	22	35	52	93.37	101.40	40	50	10	38.3	29.66	1.60
MHGH0400222	1	-DIN6	22	45	65	93.37	101.40	40	50	14	48.8	29.66	1.60
MHGH0400223	2	-DIN6	22	32	50	93.37	101.37	40	60	10	35.3	29.66	2.04
MHGH0400224	2	-DIN6	22	32	44	93.37	101.37	40	80	*	*	29.66	2.10
MHGH0400225	2	-DIN6	22	40	60	93.37	101.37	40	85	12	43.3	29.66	2.26
MHGH0400226	2	-DIN6	22	40	50	93.37	101.37	40	85	*	*	29.66	1.95
MHGH0400241	2	-DIN6	24	32	55	101.86	109.90	40	75	10	35.3	35.79	2.80
MHGH0400242	2	-DIN6	24	35	55	101.86	109.90	40	75	10	38.3	35.79	2.80
MHGH0400243	2	-DIN6	24	40	62	101.86	109.90	40	75	12	43.3	35.79	2.80
MHGH0400244	2	-DIN6	24	45	68	101.86	109.90	40	75	14	48.8	35.79	2.80
MHGH0400245	2	-DIN6	24	55	80	101.86	109.90	40	80	16	59.3	35.79	3.00
MHGH0400251	1	-DIN6	25	35	52	106.10	114.10	40	50	10	38.3	36.22	2.00
MHGH0400252	1	-DIN6	25	45	65	106.10	114.10	40	50	14	48.8	36.22	2.00

MHGH-DIN6 Helical Teeth Ground Pinions Quality Grade

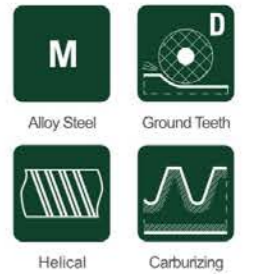
Quality Grade : DIN 6 Hardness : HRC 58-62°
 Material : Alloy Steel Heat Treatment : Carburizing and Quenching
 Left Hand Angle : 19°31'42"



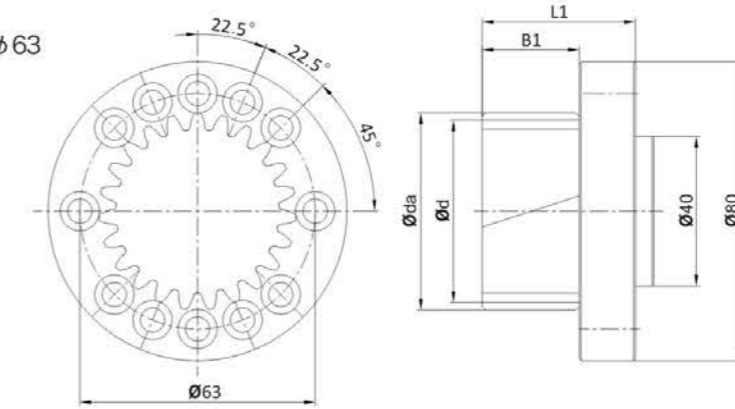
Code	Fig.	DIN	No. of Teeth	d1	d2	d Pitch Circle Diameter PCD	da Diameter of Addendum Circle	W1	W2	k	h	F _{t,kN} Max. TORQUE* Feed-Force	KG
Module 4													
MHGH0400253	2	-DIN6	25	55	80	106.10	114.10	40	80	16	59.3	36.22	3.20
MHGH0400254	2	-DIN6	25	32	50	106.10	114.10	40	60	10	35.3	36.22	2.66
MHGH0400255	2	-DIN6	25	32	44	106.10	114.10	40	80	*	*	36.22	2.72
MHGH0400256	2	-DIN6	25	40	60	106.10	114.10	40	85	12	43.3	36.22	2.88
MHGH0400257	2	-DIN6	25	40	50	106.10	114.10	40	85	*	*	36.22	2.58
MHGH0400301	2	-DIN6	30	32	50	127.32	135.32	40	60	10	35.3	38.00	3.88
MHGH0400302	2	-DIN6	30	32	44	127.32	135.32	40	80	10	*	38.00	3.94
MHGH0400303	2	-DIN6	30	40	60	127.32	135.32	40	85	12	43.3	38.00	4.10
MHGH0400304	2	-DIN6	30	40	50	127.32	135.32	40	85	*	*	38.00	3.80
Module 5													
MHGH0500181	2	-DIN6	18	45	68	95.49	105.50	50	85	14	48.8	37.38	2.90
MHGH0500201	2	-DIN6	20	40	60	106.10	116.10	50	85	12	43.3	41.84	3.34
MHGH0500202	2	-DIN6	20	40	50	106.10	116.10	50	90	*	*	41.84	3.16
MHGH0500221	2	-DIN6	22	40	60	116.71	126.71	50	85	12	43.3	46.34	4.06
MHGH0500222	2	-DIN6	22	40	50	116.71	126.71	50	90	*	*	46.34	3.88
MHGH0500241	2	-DIN6	24	45	68	127.32	137.30	50	85	14	48.8	55.93	4.90
MHGH0500242	2	-DIN6	24	55	80	127.32	137.30	50	90	16	59.3	55.93	5.20
MHGH0500243	2	-DIN6	24	75	110	127.32	137.30	50	110	20	79.9	55.93	6.40
MHGH0500251	2	-DIN6	25	40	60	132.63	142.63	50	85	12	43.3	56.58	5.28
MHGH0500252	2	-DIN6	25	40	50	132.63	142.63	50	90	*	*	56.58	5.10
MHGH0500301	2	-DIN6	30	40	60	159.16	169.16	50	85	12	43.3	59.37	7.66
MHGH0500302	2	-DIN6	30	40	50	159.16	169.16	50	90	*	*	59.37	7.48
Module 6													
MHGH0600201	2	-DIN6	20	55	80	127.32	139.30	60	100	16	59.3	60.26	6.00
MHGH0600202	2	-DIN6	20	75	110	127.32	139.30	60	120	20	79.9	60.26	7.20
MHGH0600203	2	-DIN6	20	55	80	127.32	139.32	60	85	16	59.3	60.26	5.28
MHGH0600204	2	-DIN6	20	55	68	127.32	139.32	60	105	*	*	60.26	5.25
MHGH0600221	2	-DIN6	22	55	80	140.06	152.06	60	85	16	59.3	66.74	6.53
MHGH0600222	2	-DIN6	22	55	68	140.06	152.06	60	105	*	*	66.74	6.50
MHGH0600251	2	-DIN6	25	55	80	159.16	171.20	60	100	16	59.3	81.49	9.00
MHGH0600252	2	-DIN6	25	75	110	159.16	171.20	60	120	20	79.9	81.49	10.80
MHGH0600253	2	-DIN6	25	55	80	159.16	171.16	60	85	16	59.3	81.49	8.64
MHGH0600254	2	-DIN6	25	55	68	159.16	171.16	60	105	*	*	81.49	8.61
MHGH0600301	2	-DIN6	30	55	80	190.99	212.99	60	85	16	59.3	85.49	12.74
MHGH0600302	2	-DIN6	30	55	68	190.99	212.99	60	105	*	*	85.49	12.71
Module 8													
MHGH0800181	2	-DIN6	18	75	110	152.79	168.80	80	140	20	79.9	95.68	11.00
MHGH0800202	2	-DIN6	20	85	125	169.80	185.80	80	145	22	90.4	107.12	14.00
Module 10													
MHGH1000201	2	-DIN6	20	85	125	212.21	232.20	100	165	22	90.4	167.38	26.00

MHFGH-DIN6 Helical Flange Teeth Ground Pinions

Quality Grade : DIN 6 Hardness : HRC 58-62°
 Material : Alloy Steel Heat Treatment : Carburizing and Quenching
 Left Hand Angle : 19°31'42"



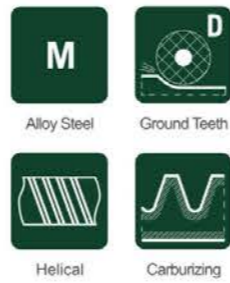
Screw Pitch Circle $\phi 63$



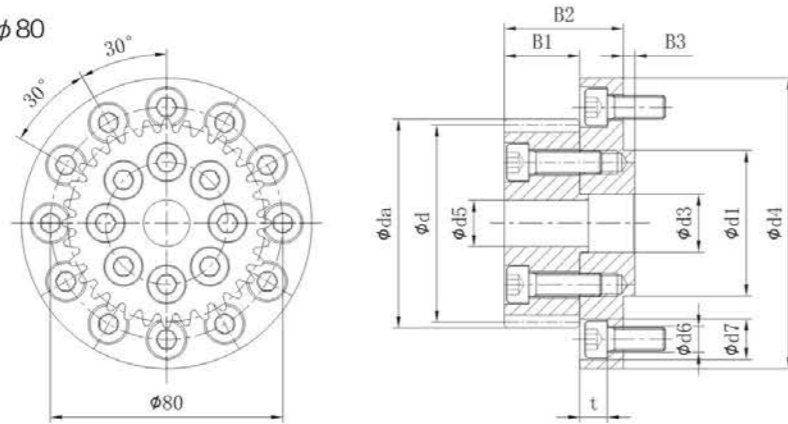
Code	DIN	No. of Teeth	X° Shift Coefficient	da Diameter of Addendum Circle	d Pitch Circle Diameter PCD	d _w Working Pitch Dia.	B1	L1	L	F _{t,kN} Max. TORQUE* Feed-Force
Module 2										
MHFGH0200121	-DIN6	12	0.5	31.465	25.565	27.465	26	41	80	6.67
MHFGH0200171	-DIN6	17	0	40.075	36.075	36.075	26	41	113.333	10.8
MHFGH0200191	-DIN6	19	0	44.319	40.319	40.319	26	41	126.667	11.16
MHFGH0200231	-DIN6	23	0	52.808	48.808	48.808	26	41	153.334	10.65

MHFGH-DIN6 Helical Teeth Ground Pinions Quality Grade

Quality Grade : DIN 6 Hardness : HRC 58~62°
 Material : Alloy Steel Heat Treatment : Carburizing and Quenching
 Left Hand Angle : 19°31'42"



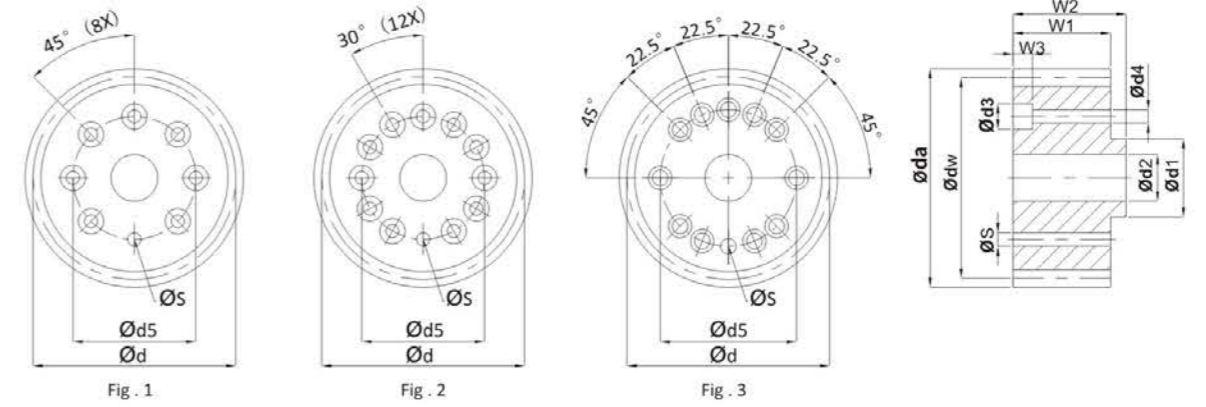
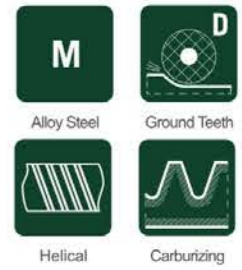
Screw Pitch Circle $\phi 80$



Code	DIN	No. of Teeth	X° Shift Coefficient	da Diameter of Addendum Circle	d Pitch Circle Diameter PCD	da _w Working Pitch Dia.	d1	d2	d3	d4	d5	d6	d7	b1	b2	b3	t	F _{ta} kN Max. TORQUE* Feed-Force
Module 2																		
MHFGH0200331	-DIN6	33	0.393	75.599	70.028	71.599	50	80	31.5	100	23.7	9	14	26	39	4	8.6	10.42
MHFGH0200361	-DIN6	36	0	80.394	76.394	76.394	50	80	31.5	100	23.7	9	14	30	43	4	8.6	10.73
MHFGH0200371	-DIN6	37	0.421	84.2	78.517	80.2	50	80	31.5	100	23.7	9	14	26	39	4	8.6	10.44
Module 3																		
MHFGH0300311	-DIN6	31	0.354	106.8	98.676	100.8	50	80	31.5	100	23.7	9	14	31	44	4	8.6	19.15

MHFGH-DIN6 Helical Flange Teeth Ground Pinions

Quality Grade : DIN 6 Hardness : HRC 58~62°
 Material : Alloy Steel Heat Treatment : Carburizing and Quenching
 Left Hand Angle : 19°31'42"



Code	Fig.	DIN	No. of Teeth	X° Shift Coefficient	da Diameter of Addendum Circle	d Pitch Circle Diameter PCD	da _w Working Pitch Dia.	d1	d2	d3	d4	d5	W1	W2	W3	F _{ta} kN Max. TORQUE* Feed-Force
Module 2																
MHFGH0200261	1	-DIN6	26	0.407	60.800	55.174	56.800	20.0	16.2	9.5	5.5	31.5	26	29	12.0	11.52
MHFGH0200262	1	-DIN6	26	0.407	60.802	55.174	56.802	20.0	16.0	9.5	5.5	31.5	26	31	11.0	11.52
MHFGH0200271	1	-DIN6	27	0.000	61.296	57.296	57.296	20.0	16.2	9.5	5.5	31.5	30	33	11.0	10.95
MHFGH0200272	1	-DIN6	27	0.000	61.296	57.296	57.296	20.0	16.0	9.5	5.5	31.5	26	31	11.0	11.99
MHFGH0200291	1	-DIN6	29	0.415	67.200	61.540	63.200	20.0	16.2	9.5	5.5	31.5	26	29	12.0	12.25
MHFGH0200292	1	-DIN6	29	0.415	67.200	61.540	63.200	25.0	20.3	11.0	6.6	40.0	26	29	10.5	12.25
MHFGH0200293	1	-DIN6	29	0.415	67.200	61.540	63.200	20.0	16.0	9.5	5.5	31.5	26	31	11.0	12.25
MHFGH0200331	1	-DIN6	33	0.393	75.599	70.028	71.599	31.5	23.7	11.0	6.6	50.0	26	29	14.0	12.62
MHFGH0200332	1	-DIN6	33	0.393	75.599	70.028	71.600	31.5	20.0	11.0	6.6	50.0	26	31	11.0	12.62
MHFGH0200351	1	-DIN6	35	0.382	79.800	74.272	75.800	20.0	16.2	9.5	5.5	31.5	26	29	12.0	12.78
MHFGH0200352	1	-DIN6	35	0.382	79.800	74.272	75.800	20.0	16.0	9.5	5.5	31.5	26	31	11.0	12.78
MHFGH0200361	1	-DIN6	36	0.000	80.394	76.394	76.394	31.5	23.7	11.0	6.6	50.0	30	33	8.0	14.83
MHFGH0200362	1	-DIN6	36	0.000	80.394	76.394	76.394	31.5	20.0	11.0	6.6	50.0	26	31	11.0	12.85
MHFGH0200371	1	-DIN6	37	0.421	84.200	78.517	80.200	31.5	23.7	11.0	6.6	50.0	26	29	14.0	12.93
MHFGH0200372	2	-DIN6	37	0.421	84.200	78.517	80.200	31.5	23.7	11.0	6.6	50.0	26	29	14.0	12.93
MHFGH0200373	1	-DIN6	37	0.421	84.200	78.517	80.200	31.5	20.0	11.0	6.6	50.0	26	31	11.0	12.93
MHFGH0200401	1	-DIN6	40	0.379	90.4	84.883	86.4	40	32.2	6.6	11	63	26	29	11.5	12.95
MHFGH0200451	1	-DIN6	45	0.327	100.8	95.493	96.8	40	32.2	6.6	11	63	26	29	11.5	13.15
Module 3																
MHFGH0300311	2	-DIN6	31	0.354	106.800	98.676	100.800	31.5	23.7	11.0	6.6	50.0	31	35	14.0	22.25
MHFGH0300312	1	-DIN6	31	0.354	106.800	98.676	100.800	31.5	23.7	11.0	6.6	50.0	31	35	14.0	22.25
MHFGH0300313	1	-DIN6	31	0.354	106.800	98.676	100.800	31.5	20.0	11.0	6.6	50.0	31	36	11.0	22.25
MHFGH0300314	3	-DIN6	31	0.354	106.800	98.676	100.800	40.0	31.5	11.0	6.6	63.0	31	36	11.0	22.25
MHFGH0300351	2	-DIN6	35	0.365	119.600	111.409	113.600	50.0	32.2	14.0	9.0	80.0	31	35	10.5	22.86
MHFGH0300352	3	-DIN6	35	0.365	119.598	111.409	113.598	40.0	31.5	11.0	6.6	63.0	31	36	11.0	22.86
MHFGH0300401	2	-DIN6	40	0.379	135.599	127.324	129.599	50.0	32.2	14.0	9.0	80.0	31	35	10.5	23.46
MHFGH0300402	3	-DIN6	40	0.379	135.598	127.324	129.598	40.0	31.5	11.0	6.6	63.0	31	36	11.0	23.46
MHFGH0300403	2	-DIN6	40	0.379	135.598	127.324	129.598	50.0	40.0	14.0	9.0	80.0	31	36	11.0	23.46
Module 4																
MHFGH0400301	2	-DIN6	30	0.000	135.324	127.324	127.324	50.0	32.2	14.0	9.0	80.0	45	49	9.5	42.75
MHFGH0400302	3	-DIN6	30	0.000	135.324	127.324	127.324	40.0	32.2	14.0	9.0	63.0	45	49	9.5	42.75
MHFGH0400303	2	-DIN6	30	0.000	135.324	127.324	127.234	50.0	40.0	14.0	9.0	80.0	41	46	16.0	38.95
MHFGH0400381	2	-DIN6	38	0.240	171.200	161.277	163.200	80.0	56.1	17.5	11.0	125.0	41	45	10.5	40.98
MHFGH0400382	2	-DIN6	38	0.24	171.197	161.277	163.197	80.0	60.0	17.5	11.0	125.0	41	46	16.0	40.98
Module 5																
MHFGH0500211	2	-DIN6	21	0.000	121.109	111.409	111.409	50.0	32.2	14.0	9.0	80.0	59	64	11.5	52.04
MHFGH0500212	2	-DIN6	21	0.000	121.409	111.409	111.409	50.0	40.0	14.0	9.0	80.0	51	56	16.0	44.98
MHFGH0500361	2	-DIN6	36	0.000	200.986	190.986	190.986	80.0	56.1	17.5	11.0	125.0	55	60	12.5	67.96
MHFGH0500362	2	-DIN6	36	0.000	200.986	190.986	190.986	80.0	60.0	17.5	11.0	125.0	51	56	16.0	50.66